



Slangspecialisten

YOUR SUPPLIER OF INDUSTRIAL HOSES,
COUPLINGS, HYDRAULICS & RUBBER PRODUCTS



HOSES FOR THE FOOD INDUSTRY

APPROVED
ACCORDING TO LAWS
& REGULATIONS



NEW PRODUCTS

GREAT FLOW SINCE 1996	4
ENVIRONMENTAL RESPONSIBILITY & SUSTAINABILITY	5
CLEANING HOSE FOOD QUALITY 1363	6
CLEANING HOSE 165 °C FOOD QUALITY	8
SPECIAL CHARACTERISTICS OF FOOD GRADE HOSEL	10
FOOD & BEVERAGE HOSE WITHOUT HELIX 1367	12
FOOD & BEVERAGE HOSE WITH HELIX 1369	14
GLIDETECH	16
GLIDETECH NITRILE 1374	17
GLIDETECH EPDM 1375	18
GLIDETECH NR 1376	19
GLIDETECH BUTYL 1377	20
PU HOSES FOR THE FOOD INDUSTRY	22
TECHNICAL INFORMATION	24
COUPLINGS FOR THE FOOD INDUSTRY	25
HOSE SLEEVE SMS 2897 & SMS NUT 2893	26
DIN HOSE SLEEVE 2897D & DIN NUT 2893D	27
SMS COUPLING 2890 & SMS NUT 2893	27
SAFETY CLAMP ALUMINUM	28
SMS NUT RUBBER PROTECTOR 2896	30
HOSE SLEEVE CLAMP 2881 & CLAMP SINGLE BOLT 2887	31
WASHDOWN GUN WHITE 2224SS & SWIVEL DN 2225	32

All food hoses in this brochure are manufactured in accordance with the applicable rules and regulations.



GREAT FLOW SINCE 1996

Since Slangspecialisten was founded in 1996, many good drinks have been enjoyed and large plates of food served around the world. The taste of our food depends, of course, on the quality of the raw material. Therefore, high demands are placed on the handling and transportation of our food. All the way from the pasture to the dinner table. Our hose solutions are a small part of the process, but they are absolutely crucial to the result. Choosing equipment that can withstand various types of stress, and that complies with the hygiene requirements and regulations in the food industry, is crucial to ensuring that the raw material is enjoyed in the best possible way in the final stage.

RAW MATERIAL MANAGEMENT

When handling raw materials, both solid and liquid media, choosing the right hose is important. A food hose used for loading and unloading is subject to great stress and should be able to be handled in a user-friendly way. Weight, flexibility and friction play a crucial role when handling the hose.

PRODUCTION

In a production plant, there are high demands on the suitability of the hose. In the food industry, the requirements for cleanliness are particularly high, so there are hygienic requirements for connections, couplings and assembly.

ASSEMBLED AND READY

We provide customized solutions for machine manufacturers in the food industry, such as welded metal hoses and assembled food hoses with SMS couplings. The food hoses meet your requirements for FDA approval and we perform hose labeling to ensure traceability in your production facility.



Material certificates

If you want material certificates for components, they are available on request.

ENVIRONMENTAL RESPONSIBILITY & SUSTAINABILITY

Environmental responsibility is a central part of our business concept and we strive to make conscious choices when it comes to purchasing hoses and components. We prioritize eco-friendly alternatives, eco-labeled products and the latest environmental classifications. We also strive to work with suppliers and partners who share our environmental awareness and commitment.

We follow the ISO 14001 standard, an international standard for environmental management systems. This is proof of our commitment to environmental protection and sustainability. Through our ISO 14001, we have established structured processes to identify, monitor and reduce our environmental impacts.

We are proud to supply mainly products that do not contain any perfluorinated substances (PFAS). This is a conscious strategy to promote environmentally friendly production and reduce negative environmental impacts.

Our commitment is continuously improving. We take into account internal and external requirements, current legislation and other binding obligations that affect the environmental aspects of the company.

It is recommended that new hoses be flushed before and after use.

CLEANING HOSE FOOD QUALITY | 1363

Suitable for food industry, transport of warm and cold fluids. Resistant to vegetable and animal oils. Suitable for beer, wine, fruit juice and milk.



-20 °C – +100 °C.

Lenght
50 m

Product specification (Working pressure (WP) & burst pressure (BP) is measured in bar.

Art nr	ID mm	Thickness	OD mm	WP	BP	Bending radius	Weight kg/m
1363-0013	12,7	4,5	21,7	20	60	86	0,32
1363-0016	15,9	4,6	25,1	20	60	100	0,39
1363-0019	19,1	4,8	28,7	20	60	114	0,47
1363-0025	25,4	5,1	35,6	20	60	142	0,65



Resistant to vegetable
& animal oils

Inside white NBR, outside
smooth blue NBR/PVC




Polyester reinforced, tasteless
and odorless

Cleaning in the food industry is part of the manufacturing process and a daily task in production.

CLEANING HOSE 165 °C FOOD QUALITY | 1365

Food hose specifically for steam and hot water cleaning in the food industry. A very flexible hose.

 -40° C – +165 °C.

**Lenght
40 m**

Product specification (Working pressure (WP) & burst pressure (BP) is measured in bar.

Art nr	ID mm	Thickness	OD mm	WP 164 °C	BP 95 °C	Sprängtryck	Vikt kg/m
1365-0013	13	5	23	6	20	60	0,35
1365-0016	16	5	26	6	20	60	0,41
1365-0019	19	6	31	6	20	60	0,60
1365-0025	25	7	39	6	20	60	0,93



Abrasion resistant



Ozone resistant



Resistant to ageing



Oil resistant

Internal white EPDM and external blue
NBR. Synthetic textile reinforcement



SPECIAL CHARACTERISTICS OF FOOD GRADE HOSE

We have high expectations for our food and therefore the requirements for food handling are also important. Food grade hose is handled with great care in terms of hygiene. We supply food approved hoses for liquid and solid media with properties adapted to a wide range of applications.

CLEANLINESS

WEIGHT

TEMPERATURE RESISTANCE

A blue food-grade hose is shown at an angle. A white label is wrapped around it, featuring a logo and text. The logo consists of a stylized blue 'S' inside a circle. The text on the label reads 'Slangspecialisten FOOD & BEVERAGE FDA' in blue capital letters.

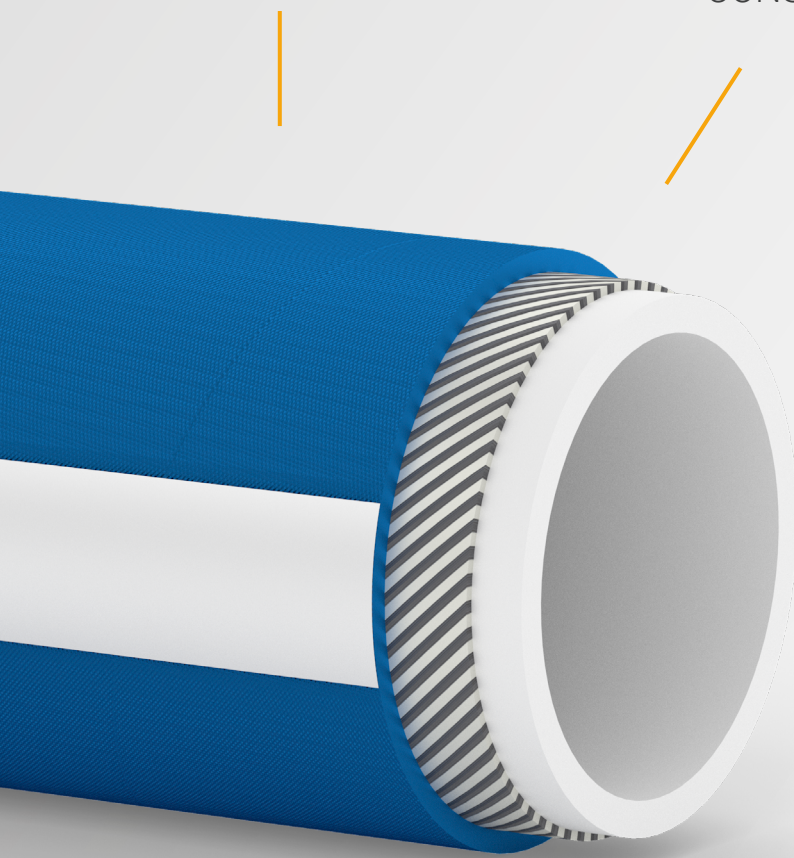
 **Slangspecialisten FOOD & BEVERAGE FDA**

Slangspecialisten delivers products in accordance with the rules and regulations of the National Food Agency.

WEAR AND WEATHER RESISTANCE

CONSTRUCTION

CERTIFICATES AND APPROVALS



FOOD HOSE WITHOUT HELIX | 1367

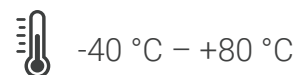
Food hose 1367 is an FDA/EU 1935/2004 approved non-spiral hose available in brewery, fat and oil, liquid and solid food versions.

Product specification (Working pressure (WP) & burst pressure (BP) is measured in bar.

Art nr	ID mm	Thickness	OD mm	WP	BP	Bending radius	Weight kg/m
1367-0025	25	6	37	6	18	40	0,71
1367-0032	32	6	44	6	18	40	0,87
1367-0038	38	6	50	6	18	40	1,00
1367-0050	51	6	63	6	18	40	1,30
1367-0063	63	6	75	6	18	40	1,58
1367-0075	76	6	88	6	18	40	4,16
1367-0100	102	6	114	6	18	40	5,89
1367-0025F	25	6	37	10	30	40	0,80
1367-0032F	32	6	44	10	30	40	0,99
1367-0038F	38	7	52	10	30	40	1,44
1367-0050F	51	7	66	10	30	40	2,03
1367-0063F	63,5	8	79,5	10	30	40	3,35
1367-0075F	76	10,5	97	10	30	40	4,16
1367-0100F	102	11,5	125	10	30	40	5,89
1367-0025B	25	6	37	10	30	40	0,76
1367-0032B	32	6	44	10	30	40	1,27
1367-0038B	38	7	52	10	30	40	1,83
1367-0050B	51	7,5	66	10	30	40	2,41
1367-0063B	63,5	8	79,5	10	30	40	3,95
1367-0075B	76	12,5	101	10	30	40	4,18
1367-0100B	102	15	132	10	30	40	6,68

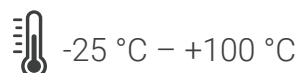
FOOD & BEVERAGE HOSE WITHOUT HELIX 1367

Especially suitable for milk, beer, wine, juice.



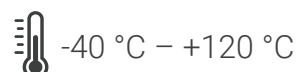
FATTY FOODS WITHOUT HELIX 1367F

Especially suitable for fatty foods such as oil, fat and dairy products.



FOOD & BEVERAGE HOSE BREWERY WITHOUT HELIX 1367B

Especially suitable for beer, wine, spirits and cider.



FOOD HOSE WITH SPIRAL | 1369

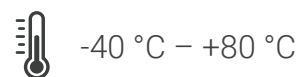
Food hose 1369 is an FDA/EU 1935/2004 approved spiral hose available in designs for brewing, fat and oil, and for liquid and solid foods.

Product specification (Working pressure (WP) & burst pressure (BP) is measured in bar.

Art nr	ID mm	Thickness	OD mm	WP	BP	Bending radius	Weight kg/m
1369-0025	25	6	37	10	30	85	0,81
1369-0032	32	6	44	10	30	115	1
1369-0038	38	6,5	51	10	30	150	1,28
1369-0050	51	6,5	64	10	30	210	1,66
1369-0063	63,5	7,5	78,5	10	30	265	2,52
1369-0075	76	7,5	91	10	30	320	2,97
1369-0100	102	8	118	10	30	430	4,16
1369-0025F	25	6	37	10	30	85	0,91
1369-0032F	32	6	44	10	30	115	1,12
1369-0038F	38	6,5	51	10	30	150	1,4
1369-0050F	51	6,5	64	10	30	210	1,8
1369-0063F	63,5	7,5	78,5	10	30	265	2,7
1369-0075F	76	8	91	10	30	320	3,17
1369-0100F	102	8	118	10	30	430	4,42
1369-0025B	25	6,5	38	10	30	125	0,95
1369-0032B	32	6	44	10	30	175	1,04
1369-0038B	38	6,5	52	10	30	230	1,28
1369-0050B	51	7	65	10	30	300	1,92
1369-0063B	63	8,5	80	10	30	450	2,7
1369-0075B	76	8,5	93	10	30	530	3,55
1369-0100B	102	9	120	10	30	760	4,89

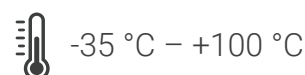
FOOD & BEVERAGE HOSE WITH HELIX 1369

Especially suitable for milk, beer, wine, juice.



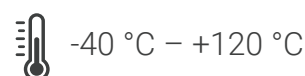
FATTY FOODS WITH HELIX 1369F

Especially suitable for fatty foods such as oil, fat and dairy products.

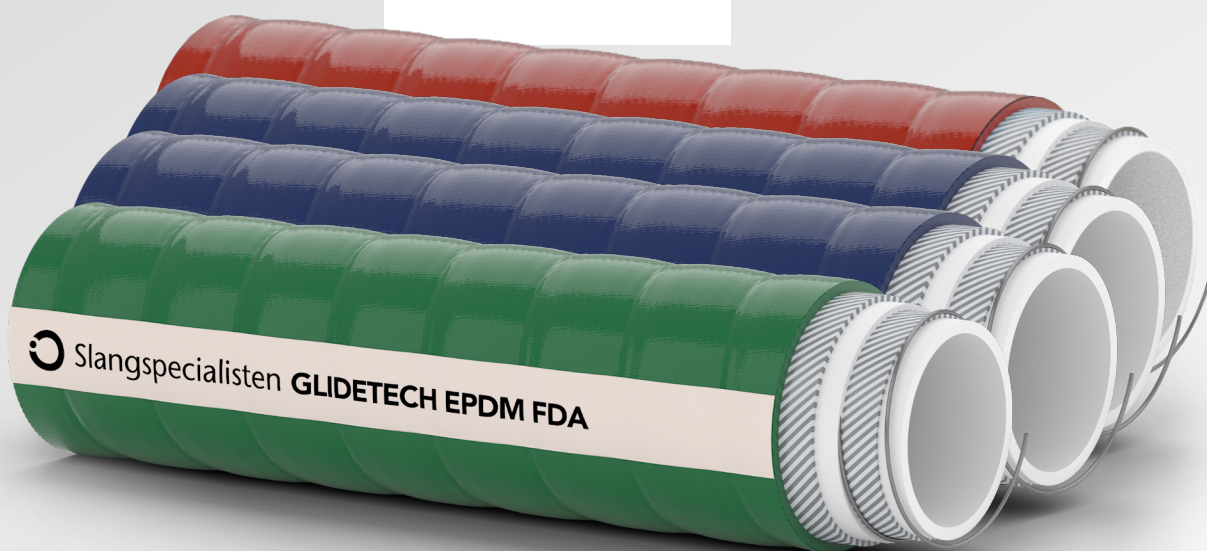
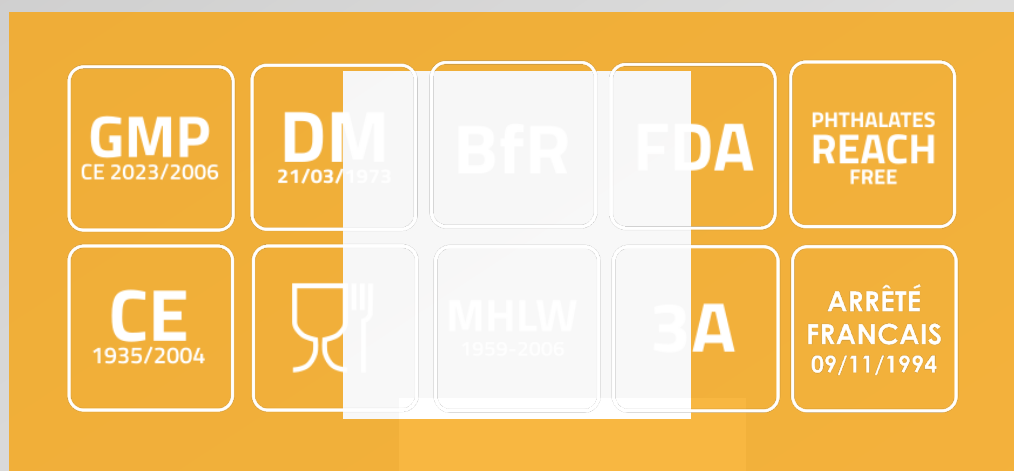



BREWERY HOSE WITH HELIX 1369B

Especially suitable for beer, wine, spirits and cider.



GLIDETECH



 -25 °C - +80 °C



Lenght
40 m


GLIDETECH NITRILE | 1374

Suction and pressure hose for fatty foods such as oil and grease. Inner tube of white NBR rubber and outer casing of blue low-friction material.

Product specification (Working pressure (WP) & burst pressure (BP) is measured in bar.

Art nr	ID mm	WP	BP	Bending radius	Weight kg/m	Vacuum
1374-0019	19	10	30	60	0,74	0,9
1374-0025	25	10	30	70	0,81	0,9
1374-0038	38	10	30	80	1,23	0,9
1374-0050	51	10	30	100	1,90	0,9
1374-0063	63,5	10	30	130	2,31	0,9
1374-0075	76	10	30	150	2,91	0,9
1374-0100	102	10	30	250	3,80	0,9



 -40 °C - +120 °C



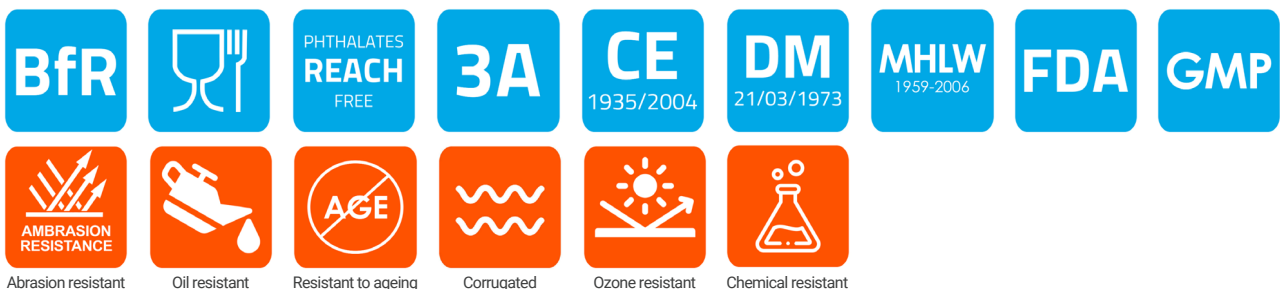
Lenght
40 m


GLIDETECH EPDM | 1375

Suction and pressure hose for a wide range of foods. Not suitable for grease and oil. Inner tube of white EPDM rubber and outer casing of green low-friction material.

Product specification (Working pressure (WP) & burst pressure (BP) is measured in bar.

Art nr	ID mm	WP	BP	Bending radius	Weight kg/m	Vacuum
1375-0019	19	10	30	60	0,70	0,9
1375-0025	25	10	30	70	0,79	0,9
1375-0038	38	10	30	80	1,19	0,9
1375-0050	51	10	30	100	1,85	0,9
1375-0063	63,5	10	30	130	2,24	0,9
1375-0075	76	10	30	150	2,83	0,9
1375-0100	102	10	30	250	3,72	0,9



 -40 °C - +80 °C



Lenght
40 m

GLIDETECH NR | 1376

Suction and pressure hose suitable for milk products, wine and non-fatty foods. Inner tube of white natural rubber and outer casing of blue low-friction material.

Product specification (Working pressure (WP) & burst pressure (BP) is measured in bar.

Art nr	ID mm	WP	BP	Bending radius	Weight kg/m	Vacuum
1376-0019	19	10	30	60	0,72	0,9
1376-0025	25	10	30	70	0,82	0,9
1376-0038	38	10	30	80	1,23	0,9
1376-0050	51	10	30	100	1,90	0,9
1376-0063	63,5	10	30	130	2,30	0,9
1376-0075	76	10	30	150	2,90	0,9
1376-0100	102	10	30	250	3,78	0,9



Oil resistant



Resistant to ageing



Corrugated

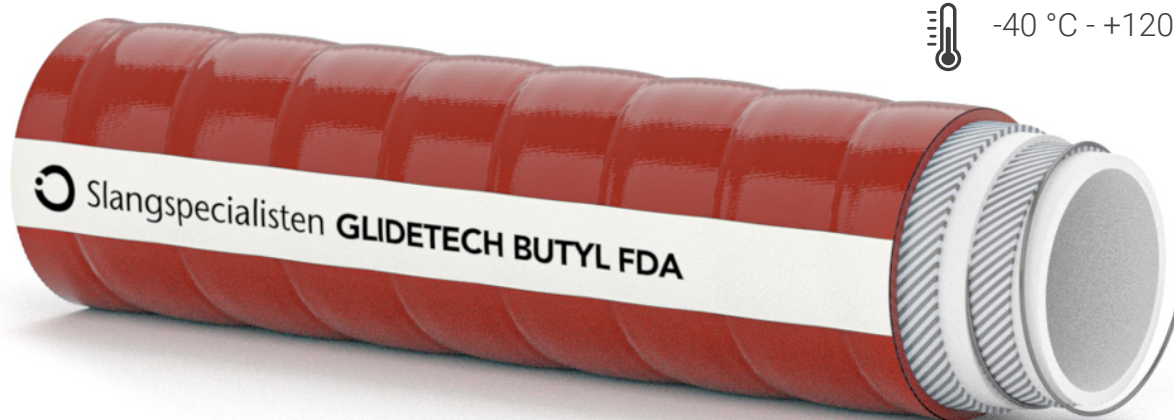



Ozone resistant



Chemical resistant

Abrasion resistant




 -40 °C - +120 °C

Length
40 m

GLIDETECH BUTYL | 1377

Suction and pressure hose suitable for wine and spirits. Low permeability, inner tube of white butyl rubber and outer casing of red low friction material.

Product specification (Working pressure (WP) & burst pressure (BP) is measured in bar.

Art nr	ID mm	WP	BP	Bending radius	Weight kg/m	Vacuum
1377-0019	19	10	30	60	0,69	0,8
1377-0025	25	10	30	70	0,85	0,8
1377-0038	38	10	30	80	1,12	0,8
1377-0050	51	10	30	100	1,47	0,8
1377-0063	63	10	30	130	1,99	0,8
1377-0075	76	10	30	150	2,49	0,8
1377-0100	102	10	30	250	3,76	0,8





PU HOSES FOR THE FOOD INDUSTRY



Slangsp


Slan

PU hoses for the food industry

Polyurethane hose PU light - 1421FOOD

Suitable for extraction of light chips, gases, vapors and solvents. Also suitable for the transportation of dry foodstuffs. Food approved.




 -40 °C – +100 °C

Polyurethane hose PU standard | 1423FOOD

Suitable for transporting powders, granules and other granular materials. Also suitable for the transportation of dry foodstuffs. Food approved.




 -40 °C – +100 °C

Polyurethane hose PU super | 1425FOOD

Suitable for very demanding chip extraction and transportation of powders, granules, grains etc. Food approved.



 -40 °C – +100 °C

FULL TRACEABILITY & LASER-MARKED PRODUCTS ACCORDING TO CUSTOMER REQUIREMENTS

Quality is important, both for you and for us. We must always be able to guarantee what we deliver. We can mark the products using modern laser equipment. In this way, we can always guarantee traceability.



TECHNICAL INFORMATION

Our products have been designed specifically for their intended use. For proper use, cleaning and sanitization of Slangspecialisten hoses, we recommend you to:

- Visit the hose guide on our website, www.slangspecialisten.se or scan the QR-code below
- Contact us at slang@slangspecialisten.se



Chemical resistance
table for polymer



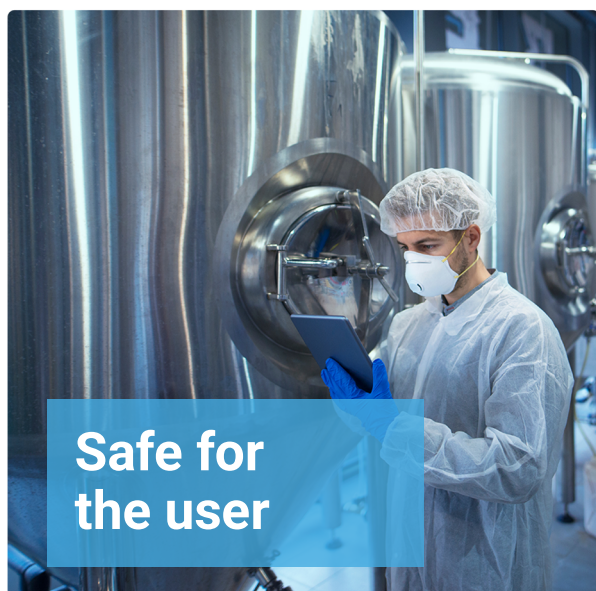
Chemical resistance
table for fluoropolymers



Guide: Cleaning of
food hose



Guide: Installation
of hose



**Safe for
the user**



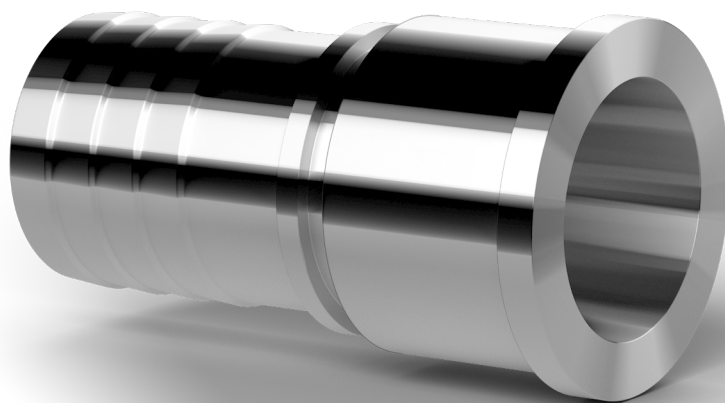
**Safe for
the consumer**

COUPLINGS FOR THE FOOD INDUSTRY

Our hoses can be used with a wide range of different couplings for food, chemical, pharmaceutical, cosmetic and industrial applications.

HOSE SLEEVE SMS | 2897

Made of AISI 316



SMS NUT | 2893

The SMS coupling is intended for use where there are high demands on safety and hygiene.

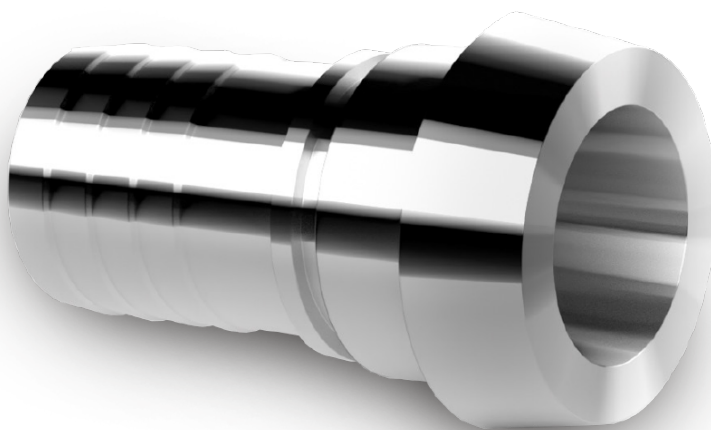


Made of AISI 304



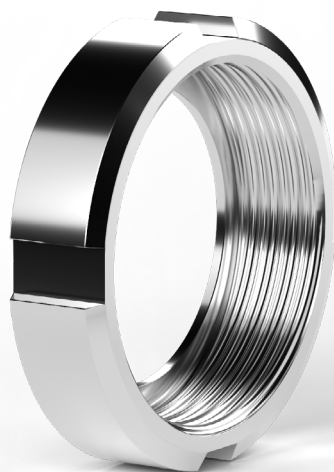
HOSE SLEEVE DIN | 2897D

Made of AISI 316L



NUT DIN | 2893D

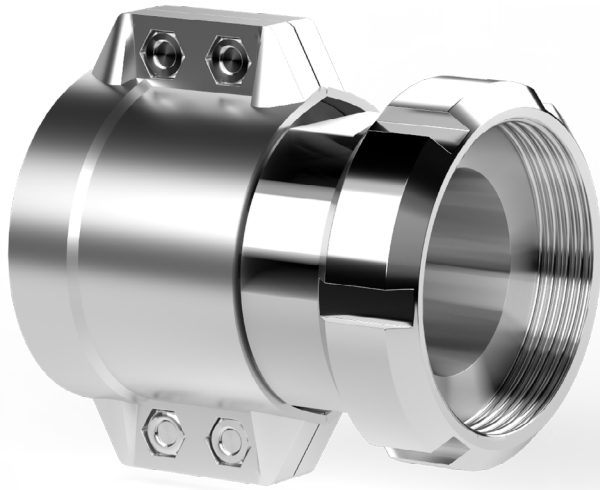
The DIN coupling is intended for use where there are high demands on safety and hygiene.



Made of AISI 304



CLAMPING JAW COUPLING | 2911



A practical food coupling for self-assembly. The coupling is intended for use where there are high demands on safety and hygiene.



2900SS



2890

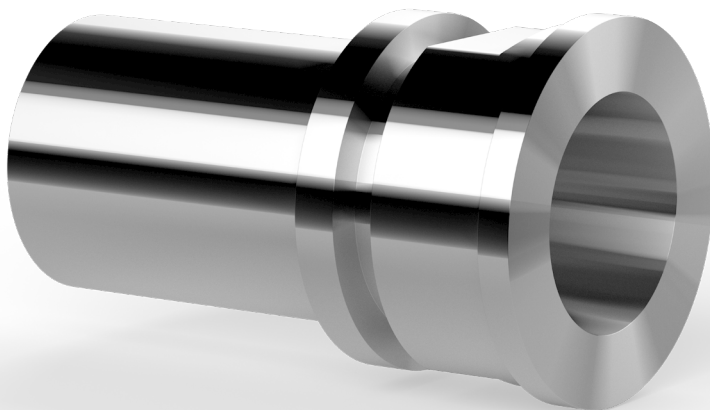


2893

SMS COUPLING FEMALE HOSE SHANK | 2890

SMS hose shank for assemble with safety clamps.

Made of AISI 316



SMS NUT | 2893

The SMS nut is intended for use where there are high demands on safety and hygiene.

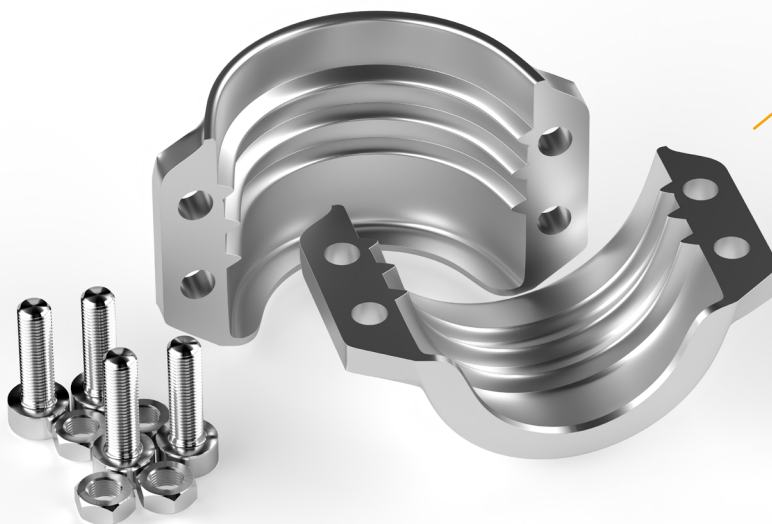


Made of AISI 304



SAFETY CLAMP STAINLESS STEEL | 2900SS

Clamping jaws for mounting on specially designed couplings.



Made of stainless steel

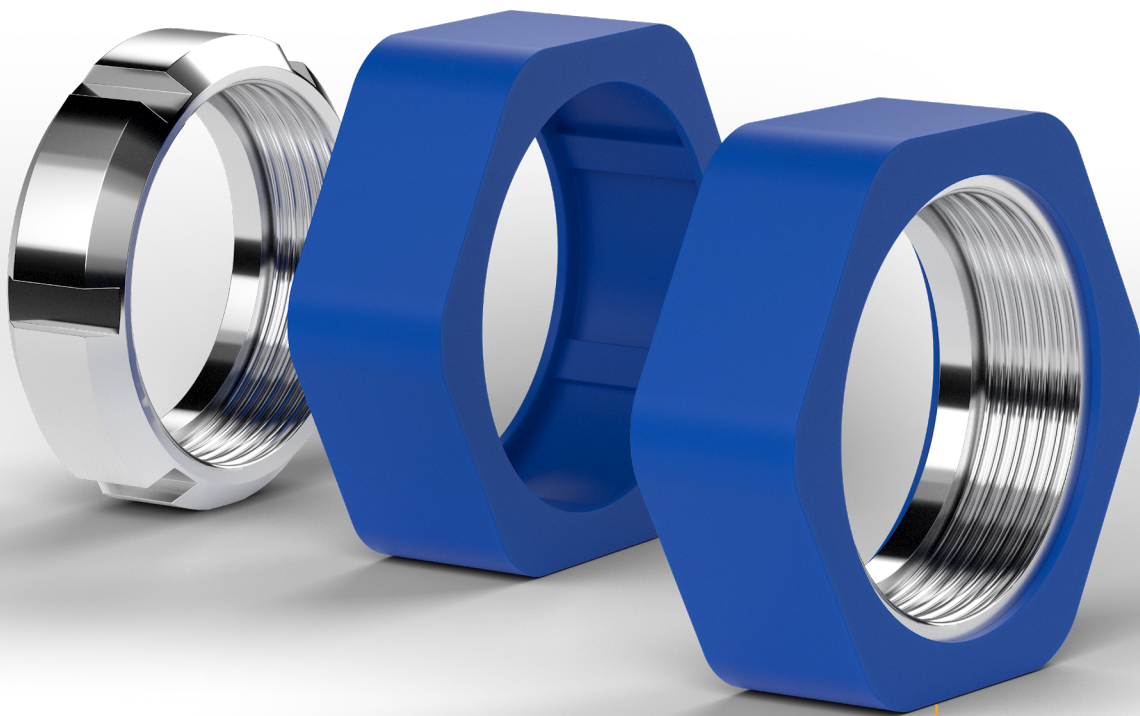


SMS NUT RUBBER PROTECTOR | 2896

A rubber cover for SMS nuts. The rubber cover saves the coupling as well as floors and other surfaces where the hose is dragged / released. This includes reduced wear and simple savings.

NUT 2893

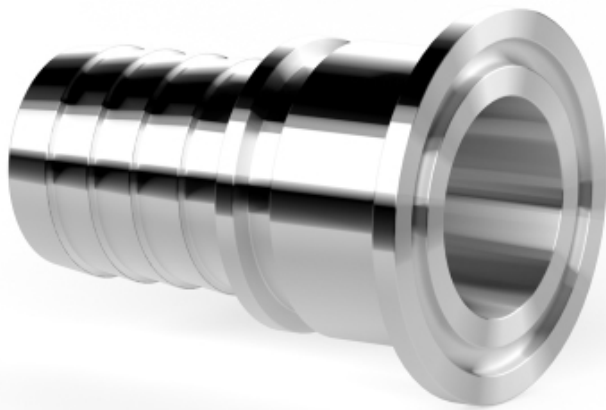
RUBBER PROTECTOR



OPTIMAL PROTECTION
AGAINST WEAR AND TEAR

CLAMP COUPLING - FOR RUBBER HOSE | 2881

Used as an effective coupling between rubber hose, pipe or a permanent installation demanding high levels of hygiene. For the transport of food, pharmaceuticals, fluids etc.



Made of AISI 316



CLAMP SINGLE BOLT | 2887

Used to connect the clamp coupling.



Made of AISI 316



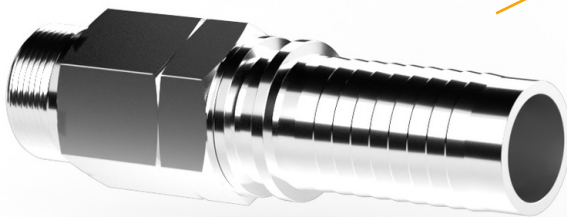
WASHDOWN GUN WHITE | 2224SS



Stainless steel flushing nozzle. White rubber coated on the entire nozzle



Swivel DN | 2225



Made of stainless steel



WE OFFER SPECIAL SOLUTIONS TAILORED TO YOUR NEEDS

At Slangspecialisten we know the art of joining steel. We have professional welding expertise on site in our workshop every day. Welding is an important part of our hose and coupling solutions.

We meet both industry requirements and your needs. Contact us if you need help with your special solution.



100 % HOSE SPECIAL



Slangspecialisten

You are always welcome to call us or visit
our service shop in Lund!
046- 211 26 00