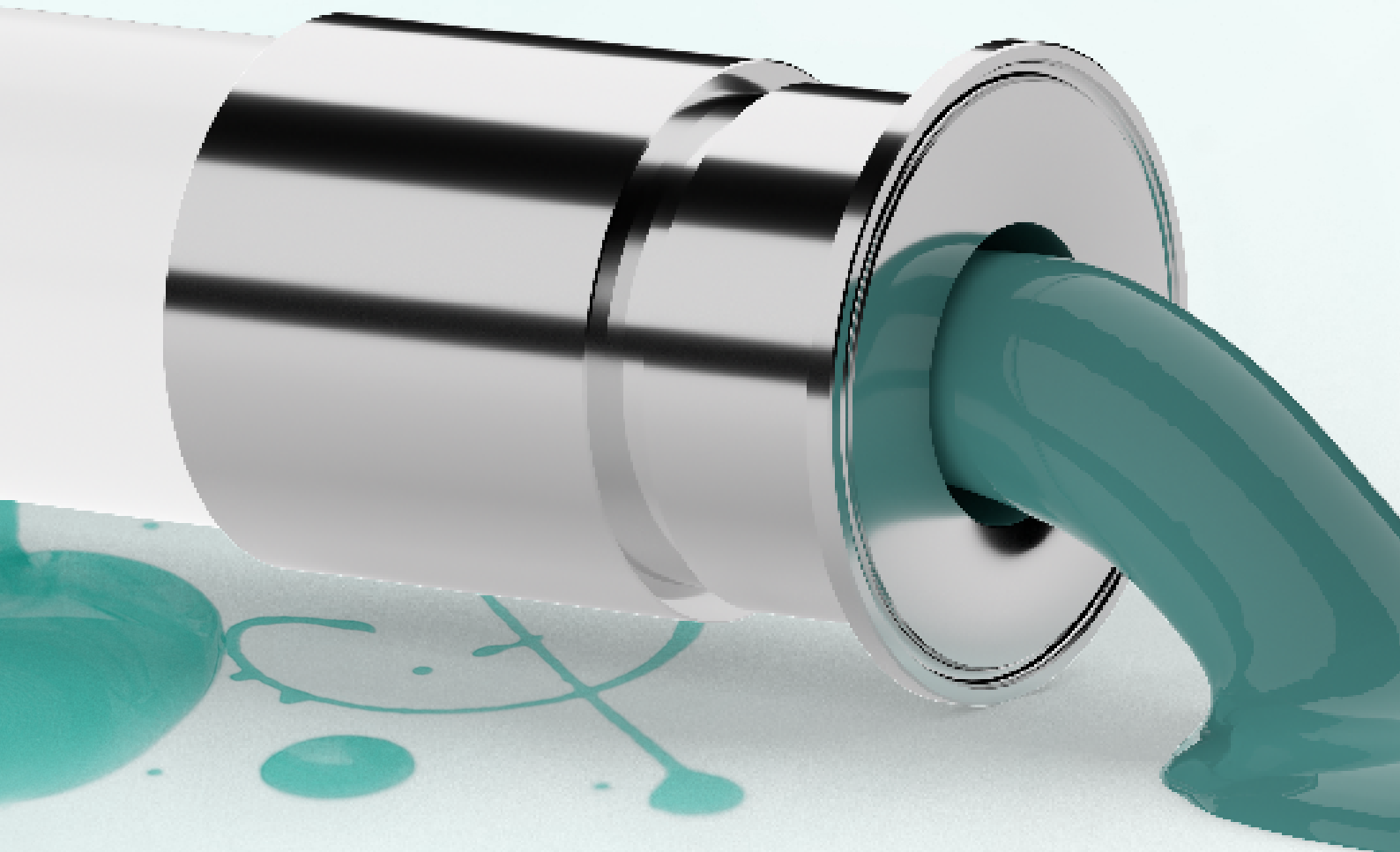




PTFE HOSE

FOR HIGH QUALITY REQUIREMENTS

EXCELLENT FOR
EXTREME
ENVIRONMENTS!



NEW ADDITIONS TO THE RANGE

PTFE	EXCELLENT FOR EXTREME ENVIRONMENTS	3
PTFE	UNIFLOW, UNIPHARMA, UNICHEM	4
1275	UNIFLOW	5
1276	UNIPHARMA	6
1277	UNICHEM	8
1278	KEMIFLEX	10
1261	PTFE HOSE WITHOUT BRAIDING	12
1265	PTFE HOSE WITH STAINLESS STEEL BRAIDING	14
1271	PTFE HOSE - CONVOLUTED INSIDE	16
1272	PTFE HOSE CONVOLUTED INSIDE EXTRUDED	18

All the PTFE hoses in the brochure are manufactured in accordance with the applicable rules and regulations.

PTFE

EXCELLENT FOR EXTREME ENVIRONMENTS

The PTFE hoses are suitable for food, pharmaceuticals, gas and most chemicals. Some of the hoses can withstand vacuum. To make the hose and coupling really tough, the PTFE tube can be collared over the sealing surface of the coupling, giving an extremely durable result. Many PTFE hoses are also available in anti-static versions.

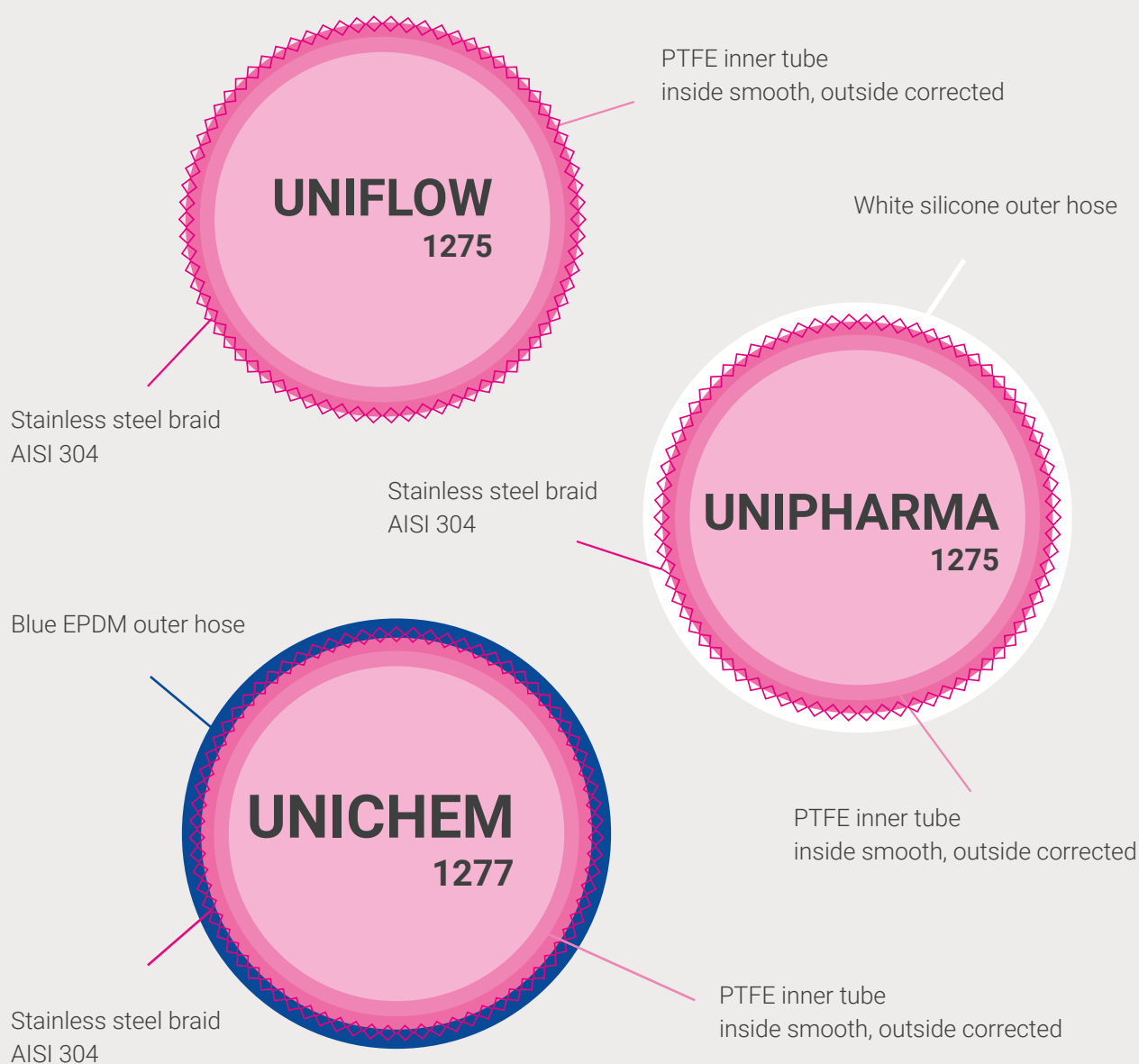
LEARN MORE ABOUT PTFE

PTFE has great properties for quality-demanding processes. Exceptionally good chemical resistance, very low friction coefficient and outstanding electrical coefficient and outstanding electrical insulation properties over a significant temperature range.

PTFE is used for technical applications where high quality is required. Virtually no substances adhere to PTFE and the material can withstand very high temperatures. The mechanical properties are improved by using fillers to achieve e.g. hardness, abrasion resistance and deformation resistance.

PTFE: UNIFLOW, UNIPHARMA & UNICHEM

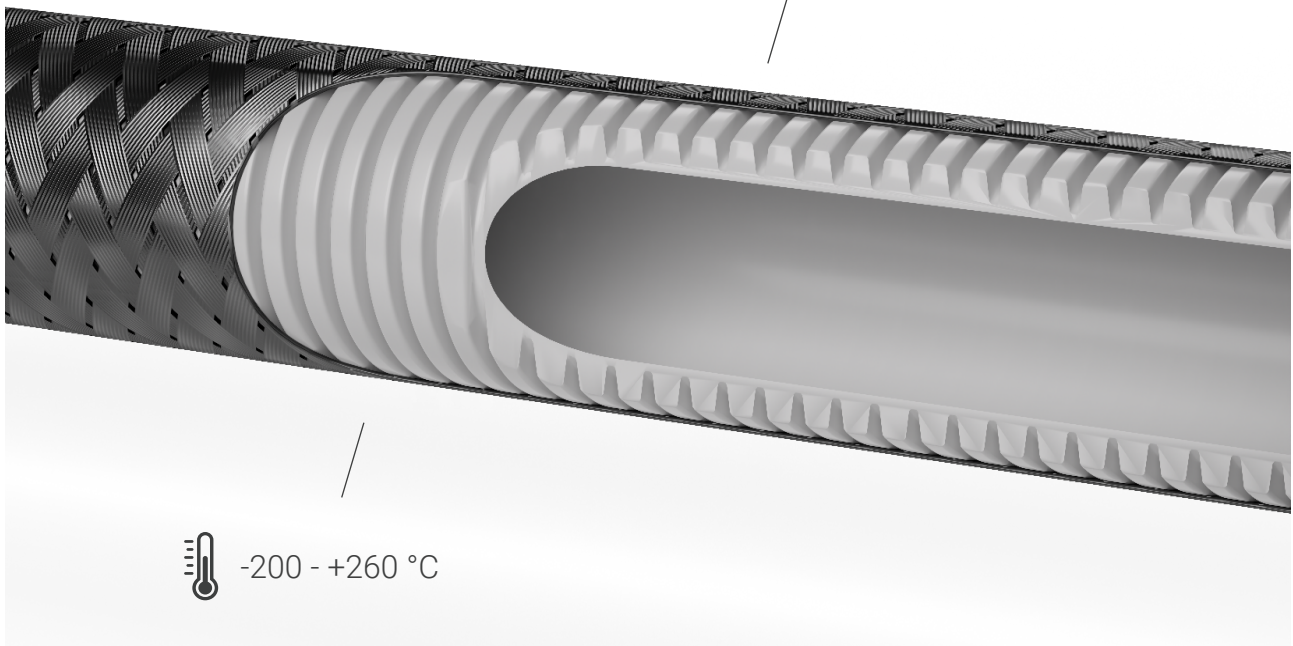
The PTFE hoses are suitable for most applications in areas with high quality requirements such as the Food, Pharmaceutical, Cosmetic, Chemical and Automotive industries, Chemical and Automotive industries. What sets them apart is the exterior.





UNIFLOW | 1275

PTFE inner tube with smooth inside and corrected outside for superior flexibility. The hose is surrounded by a steel braid.



Uniflow is a PTFE hose suitable for most applications in areas with high quality requirements such as the Food, Pharmaceutical, Cosmetic, Chemical and Automotive industries.

Art no	ID mm	OD mm	WP bar	BP bar	Bending radius mm	Weight kg/m
1275-0006	6	10,6	93	372	19	0,09
1275-0008	8	11,6	89	356	19	0,13
1275-0010	10	14,5	85	340	25	0,16
1275-0013	32	18,6	65	260	38	0,22
1275-0016	38	23,0	55	220	50	0,34
1275-0019	51	25,2	53	212	63	0,38
1275-0025	63	32,7	45	180	75	0,54

WP (Working pressure), BP (Burst pressure)

UNIPHARMA | 1276

Unipharma is a PTFE hose suitable for most applications in the high quality areas with high quality requirements such as the Food, Pharmaceutical, Cosmetic, Chemical and Automotive industries.

CONSTRUCTION:

The inner tube is made of PTFE with a smooth inner surface and a corrugated outer surface. The smooth surface provides good flow with low friction while the corrugated exterior of the inner tube provides superior flexibility. The hose has a steel braid interlayer made of AISI 304 steel. The outside of the hose is coated with white silicone. The hose is very flexible and the smooth inside provides low friction and good flow. Good vacuum resistance.

Art no	ID mm	OD mm	WP bar	BP bar	Bending radius mm
1276-0013	12,7	20,5	75	300	60
1276-0016	16,0	25,2	70	280	68
1276-0019	19,0	29,0	65	260	75
1276-0025	25,4	36,5	55	220	110
1276-0032	32,0	44,3	50	200	140
1276-0038	38,0	51,8	45	180	180
1276-0050	50,8	65,2	35	140	300


WP (Working pressure), BP (Burst pressure)

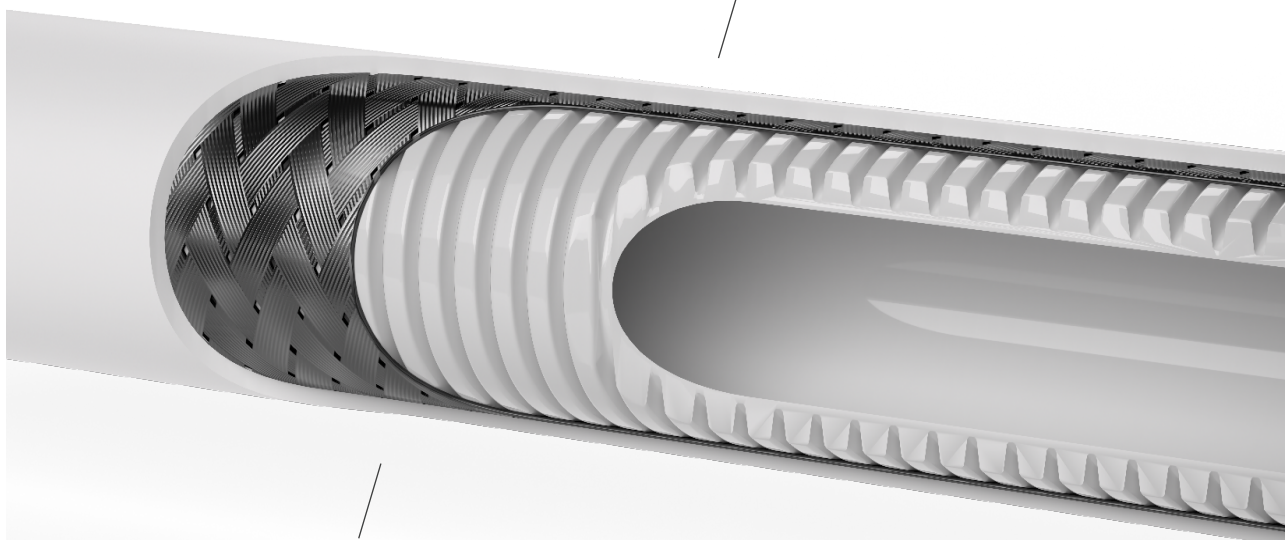


PTFE HOSE

On our website you can read more about the material PTFE.
And you can get tips and advice on PTFE hose.

Welcome to peek at:
www.slangspecialisten.se/i/slangguiden.html

 -73 °C - +260 °C



Bearings made of PTFE, steel braid and silicone for
good flow, flexibility and low friction.

UNICHEM | 1277

Unichem is a PTFE hose suitable for most applications in high quality areas where there are high quality requirements such as the food, pharmaceutical, cosmetic Pharmaceutical, Cosmetic, Chemical and Automotive industries.

CONSTRUCTION:

The inner tube is made of PTFE with a smooth inner surface and a corrugated outer surface. The smooth surface provides a good flow rate with low friction while the corrugated outside of the inner tube provides superior flexibility.

The hose has a steel braid interlayer made of AISI 304 steel and a steel spiral. The outside of the hose is coated with blue EPDM rubber. The hose is very flexible and the smooth interior provides low friction and good flow. Good vacuum resistance.

Art no	ID mm	OD mm	WP bar	BP bar	Bending radius mm
1277-0013	12,7	20,5	75	300	60
1277-0016	16,0	25,2	70	280	68
1277-0019	19,0	29,0	65	260	75
1277-0025	25,4	36,5	55	220	110
1277-0032	32,0	44,3	50	200	140
1277-0038	38,0	51,8	45	180	180
1277-0050	50,8	65,2	35	140	300

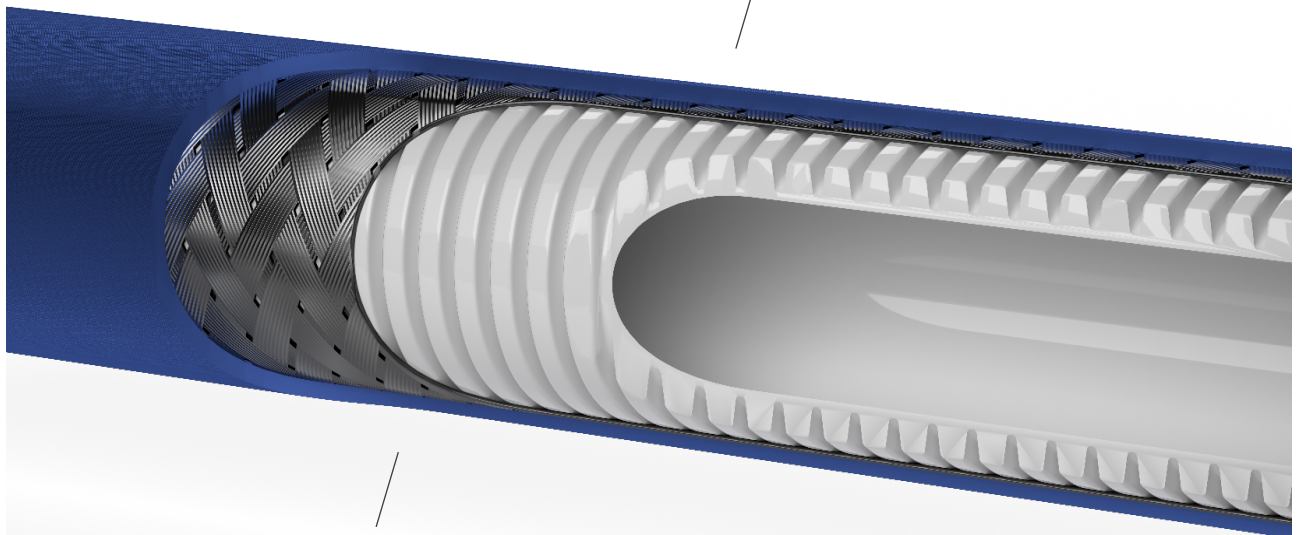
WP (Working pressure), BP (Burst pressure)



PTFE is resistant to almost all
chemicals and acids. It is therefore
ideal for extreme environments!



-73 °C - +260 °C



Bearings made of PTFE, steel
braid and EPDM rubber for good
flow, flexibility and low friction.

KEMIFLEX | 1278

Kemiflex is a PTFE hose suitable for most applications in areas where high quality requirements are set such as e.g. Food, Pharmaceutical, Cosmetic, Chemical and Automotive industries.

CONSTRUCTION:

The inner tube is made of PTFE with a corrugated profile. The outside of the hose consists of a metal braid made of AISI 304 steel. The hose is very flexible. If the hose is to be used for suction, it can be supplied with a steel spiral, which provides good vacuum resistance.

The hose is available in a black, antistatic inner tube. The inner tube can be collared over the sealing surfaces of the couplings to avoid the medium coming into contact with anything other than PTFE.

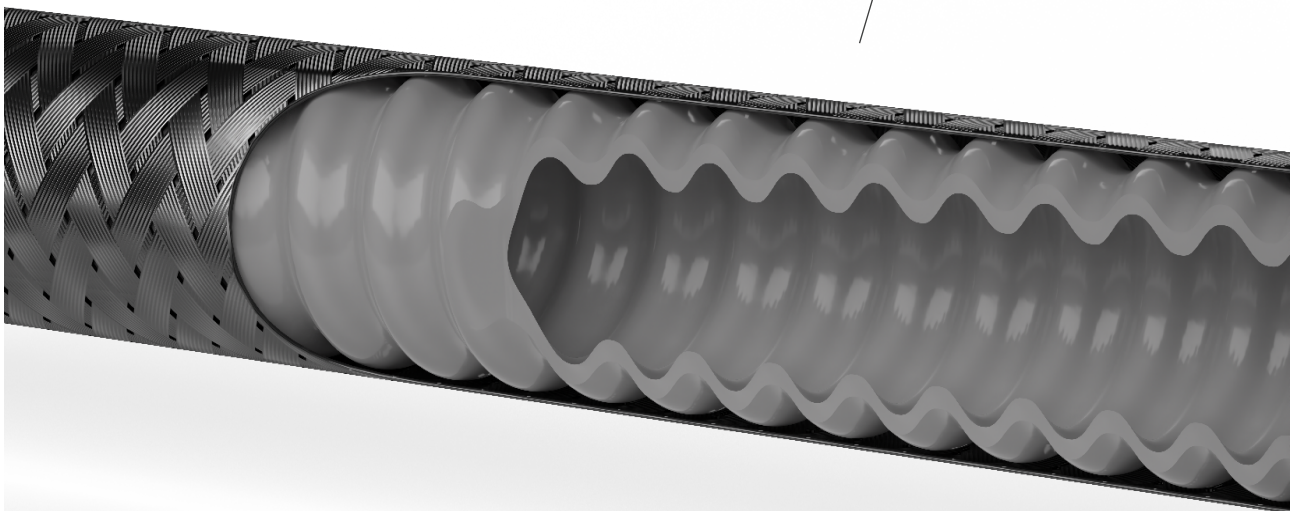
Art no	ID mm	OD mm	WP bar	BP bar	Bending radius mm
1278-0013	12,7	18,7	110	440	40
1278-0016	16,0	22,2	80	320	50
1278-0019	19,0	26,5	70	280	80
1278-0025	25,4	33,2	50	200	100
1278-0032	32,0	40,7	45	180	120
1278-0038	38,0	47,3	40	160	140
1278-0050	51,0	61,4	36	144	175
1278-0075	76,2	94,1	20	80	310
1278-0100	100,0	125,0	15	60	380

WP (Working pressure), BP (Burst pressure)

PTFE has the highest friction efficiency
of all plastics. Nothing sticks or sticks.



-73 °C - +260 °C



PTFE bearing, steel braid and steel spiral
for good flow, flexibility and low friction

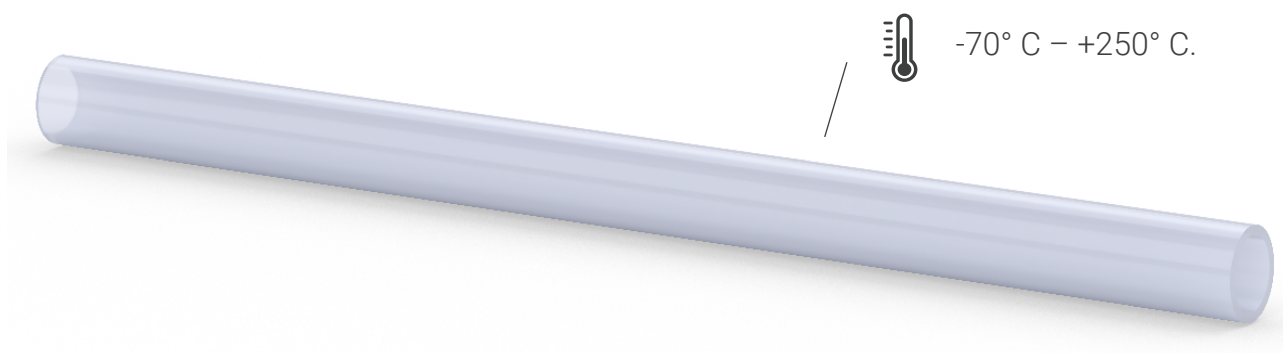
Available with black anti-static inner

PTFE HOSE WITHOUT BRAIDING | 1261

Non-braided PTFE tubing is suitable for food, pharmaceutical, gas and most chemicals.

CONSTRUCTION:

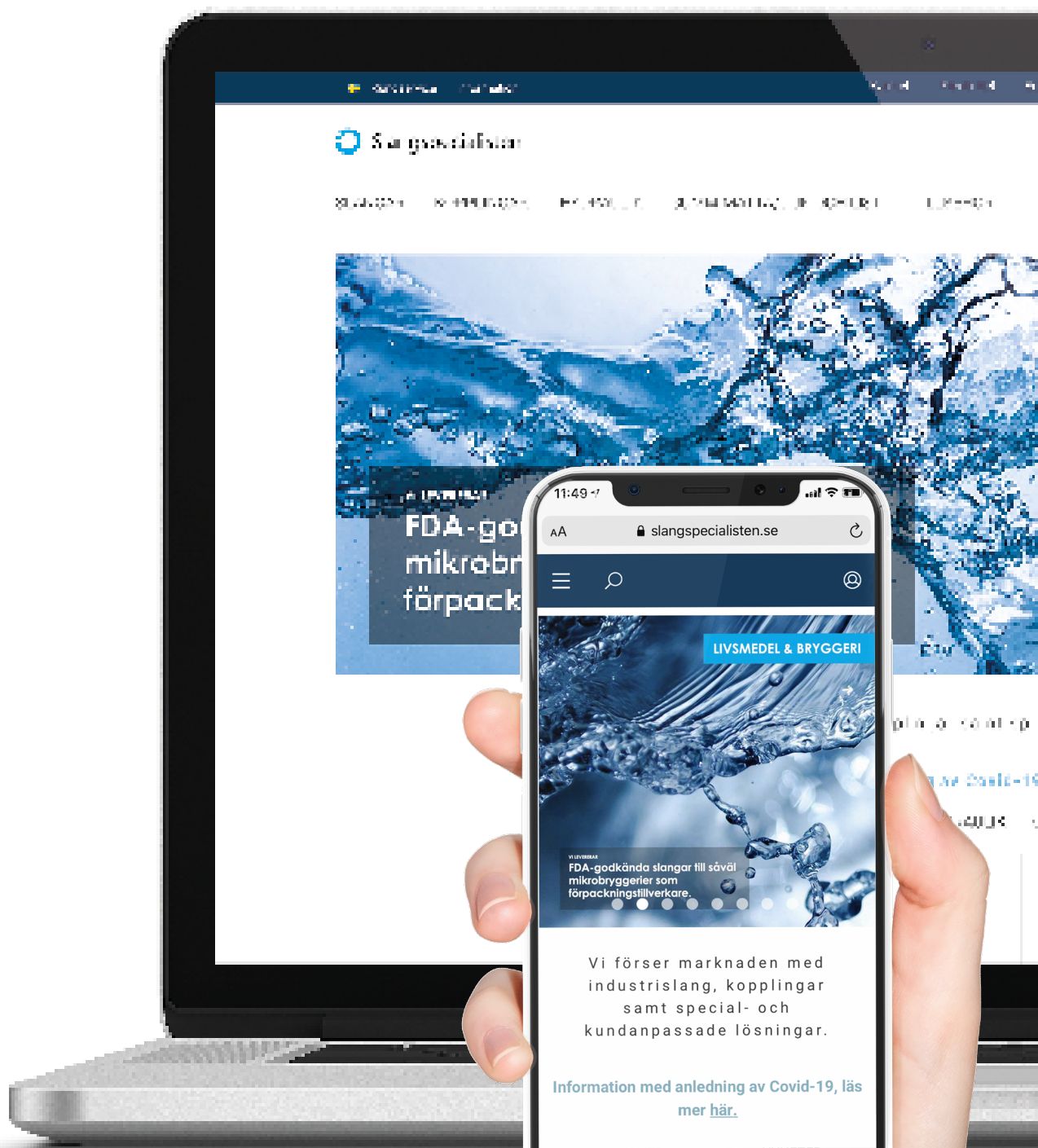
Made of PTFE. Does not absorb water, does not age, does not swell, no known substances adhere to PTFE. Teflon hose.



Art nr	ID mm	YD mm	Godstjocklek	Arbetsstryck bar	Vikt kg/m
1261-020040	2	4	1	23,0	0,02
1261-040060	4	6	1	15,0	0,04
1261-060080	6	8	1	11,0	0,05
1261-080100	8	10	1	9,0	0,06
1261-100120	10	12	1	8,0	0,08
1261-100140	12	14	1	7,0	0,09

WP (Working pressure), BP (Burst pressure)

SHOP WHENEVER YOU WANT
ON THE WEB OR ON YOUR MOBILE!



PTFE HOSE WITH STAINLESS STEEL BRAIDING | 1265

PTFE hose with stainless braiding is suitable for food, pharmaceutical, gas and most chemicals.

CONSTRUCTION:

Inner smooth PTFE. Externally a stainless braid. Does not absorb water. Good aging and weather resistance. Does not swell. No known substances adhere to PTFE. Can be obtained in an antistatic version.

Art no	ID mm	OD mm	WP bar	BP bar	Bending radius mm	Weight kg/m
1265-0006	6,7	9,4	224	672	76	0,09
1265-0008	8,4	11,1	207	621	102	0,15
1265-0010	10,3	13,5	183	552	133	0,25
1265-0013	13,4	16,6	161	483	152	0,34
1265-0016	16,6	19,8	114	345	178	0,30
1265-0019	19,8	23,0	103	310	203	0,34
1265-0025	26,1	29,3	80	241	305	0,46

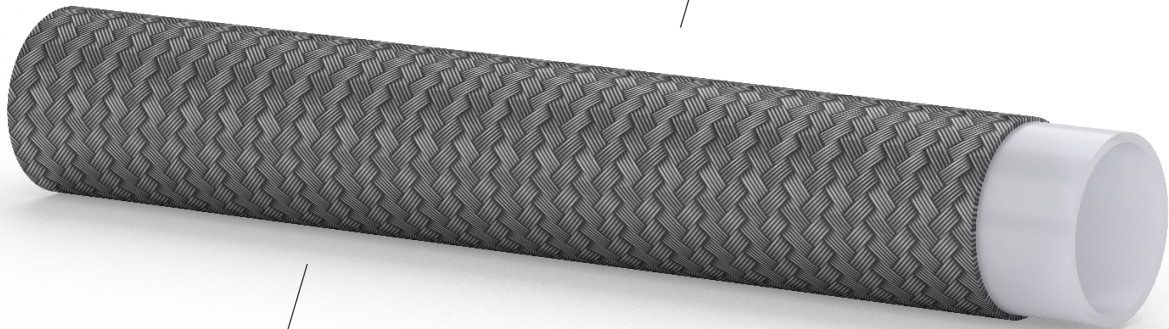
WP (Working pressure), BP (Burst pressure)



PTFE is suitable there
the fire risk is high



-70 - +260 °C



Stainless braiding

PTFE HOSE - CONVOLUTED INSIDE | 1271

Internally pleated PTFE hose is suitable for chemicals, solvents, paint, steam, food and liquid fuel. The hose is very flexible.

CONSTRUCTION:

Interior made of high quality white tightly folded PTFE. Exterior reinforced with Teflon-impregnated fiberglass fabric. Construction with stainless steel wire braiding stainless steel wire provides maximum strength.

Art no	ID mm	OD mm	WP bar	BP bar	Bending radius mm	Weight kg/m
1271-0010	10,0	15,5	125	500	30	0,25
1271-0013	13,2	18,7	105	420	50	0,32
1271-0016	16,0	23,0	100	400	55	0,41
1271-0019	19,5	26,9	90	360	60	0,54
1271-0025	25,5	32,9	80	320	75	0,72
1271-0032	32,0	39,4	64	256	115	0,82
1271-0038	38,5	45,9	53	212	170	1,05
1271-0050	51,0	58,4	35	140	200	1,27
1271-0063	64,5	75,0	25	100	300	1,96
1271-0075	76,5	88,0	20	80	360	2,40

WP (Working pressure), BP (Burst pressure)

LEARN MORE ABOUT PTFE HOSE

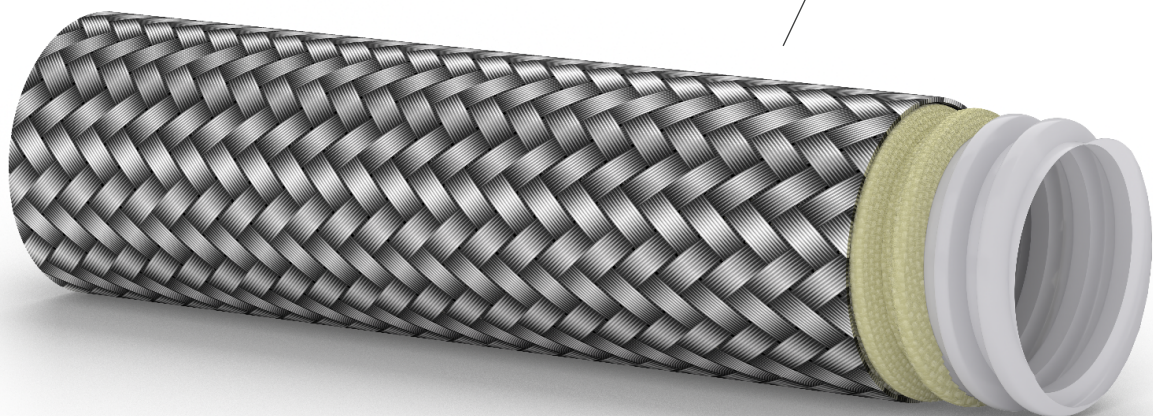
We have produced a guide to help you learn more about PTFE. Strengths and applications.

Take a look at:
www.slangspecialisten.se/i/slangguiden.html



-55 - +250 °C

Reinforced with Teflon-impregnated
glass fiber fabric



PTFE HOSE CONVOLUTED INSIDE EXTRUDED | 1272

Internally pleated extruded PTFE hose is suitable for foodstuffs, most chemicals and solvents in addition to high temperature gases. The hose is very flexible.

CONSTRUCTION:

Folded Teflon with 304 steel braid. Available in anti-static version.

Art no	ID mm	OD mm	WP bar	BP bar	Bending radius mm	Weight kg/m
1272-0006	6,0	10,6	200	600	18	0,18
1272-0008	7,9	14,0	167	500	19	0,20
1272-0010	9,7	16,4	147	440	20	0,21
1272-0013	13,0	18,5	133	400	25	0,30
1272-0016	15,5	22,6	93	280	50	0,36
1272-0019	19,6	26,0	86	260	65	0,43
1272-0025	25,4	33,7	53	160	90	0,65
1272-0032	32,5	41,2	40	120	110	0,75
1272-0038	39,4	49,3	30	90	150	0,80
1272-0050	50,4	59,7	23	69	200	0,95

WP (Working pressure), BP (Burst pressure)

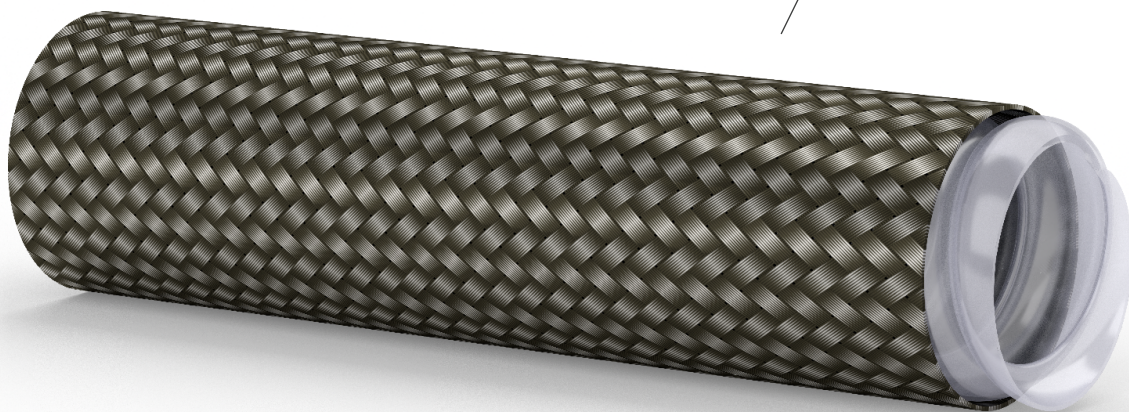


PTFE is a water-resistant material.
It never gets wet!



-60 °C – +250 °C

Folded Teflon with steel braid 304





Slangspecialisten

You are always welcome to call us or visit
our service shop in Lund! 046- 211 26 00

