

FRUIT & VEGETABLE PROCESSING PLANT

SPECIFICATIONS

- **CAPACITY: 200-5TON KG/HR (ACCORDING TO THE REQUIREMENTS OF OUR VALUABLE CLIENTS)**
- **COMPLETE PROCESSING LINE UPTO PACKAGING MACHINES.**
- **AUTOMATIC, SEMI-AUTOMATIC & MANUAL GRADE.**
- **MULTI PRODUCT PROCESSING PLANT**
- **REQUIRED SPACE: 1000 SQ.FT. - 4500 SQ.FT. APPROX.**
- **ELECTRIC LOAD: 8HP-70HP APPROX.**
- **WE ALSO PROVIDE YOU THE FOOD CONSULTANT FOR DEVELOPING OF YOUR PRODUCTS.**



MORE INFO



www.packaging-solutionsindia.com



+919818293306, +919310352152



packagingsolutionindia@gmail.com



TOMATO KETCHUP PLANT

SPECIFICATIONS

- **CAPACITY: 100-5TON KG/HR (ACCORDING TO THE REQUIREMENTS OF OUR VALUABLE CLIENTS)**
- **COMPLETE PROCESSING LINE UPTO PACKAGING MACHINES.**
- **AUTOMATIC, SEMI-AUTOMATIC & MANUAL GRADE.**
- **MULTI PRODUCT PROCESSING PLANT**
- **REQUIRED SPACE: 1000 SQ.FT. - 4500 SQ.FT. APPROX.**
- **ELECTRIC LOAD: 8HP-70HP APPROX.**
- **WE ALSO PROVIDE YOU THE FOOD CONSULTANT FOR DEVELOPING OF YOUR PRODUCTS. (ON CHARGEABLE BASIS)**



MORE INFO



www.packaging-solutionsindia.com



+919818293306, +919310352152



packagingsolutionindia@gmail.com

FRUIT JUICE PROCESSING PLANT



SPECIFICATIONS

- **CAPACITY: 100-5TON KG/HR (ACCORDING TO THE REQUIREMENTS OF OUR VALUEABLE CLIENTS)**
- **COMPLETE PROCESSING LINE UPTO PACKAGING MACHINES.**
- **AUTOMATIC, SEMI-AUTOMATIC& MANUAL GRADE.**
- **MULTI PRODUCT PROCESSING PLANT**
- **REQUIRED SPACE: 1000 SQ.FT. - 4500 SQ.FT. APPROX.**
- **ELECTRIC LOAD: 8HP-70HP APPROX.**
- **WE ALSO PROVIDE YOU THE FOOD CONSTULTANT FOR DEVLOPING OF YOUR PRODUCTS.**



www.packaging-solutionsindia.com



+919818293306



packagingsolutionindia@gmail.com

GINGER, GARLIC & TURMERIC PROCESSING UNIT

SPECIFICATIONS

- **CAPACITY: 200- 1TON KG/HR (ACCORDING TO THE REQUIREMENTS OF OUR VALUEABLE CLIENTS)**
- **COMPLETE PROCESSING LINE UPTO PACKAGING MACHINES.**
- **AUTOMATIC, SEMI-AUTOMATIC& MANUAL GRADE.**
- **MULTI PRODUCT PROCESSING PLANT**
- **REQUIRED SPACE: 1000 SQ.FT. - 2000 SQ.FT. APPROX.**
- **ELECTRIC LOAD: 5HP-50HP APPROX.**
- **WE ALSO PROVIDE YOU THE FOOD CONSTULTANT FOR DEVLOPING OF YOUR PRODUCTS.**



MORE INFO



www.packaging-solutionsindia.com



+919818293306, +919310352152



packagingsolutionindia@gmail.com

TOMATO PUREE **PROCESSING PLANT**

SPECIFICATIONS

- **CAPACITY: 100-5TON KG/HR (ACCORDING TO THE REQUIREMENTS OF OUR VALUEABLE CLIENTS)**
- **COMPLETE PROCESSING LINE UPTO PACKAGING MACHINES.**
- **AUTOMATIC, SEMI-AUTOMATIC& MANUAL GRADE.**
- **MULTI PRODUCT PROCESSING PLANT**
- **REQUIRED SPACE: 1000 SQ.FT. - 4500 SQ.FT. APPROX.**
- **ELECTRIC LOAD: 8HP-70HP APPROX.**
- **WE ALSO PROVIDE YOUTHE FOOD CONSTULTANT FOR DEVLOPING OF YOUR PRODUCTS.**



MORE INFO



www.packaging-solutionsindia.com



+919818293306, +919310352152



packagingsolutionindia@gmail.com

FRUIT DEHYDRATION PROCESSING UNIT

SPECIFICATIONS

- **CAPACITY: 200- 1TON KG/BATCH (ACCORDING TO THE REQUIREMENTS OF OUR VALUABLE CLIENTS)**
- **COMPLETE PROCESSING LINE UPTO PACKAGING MACHINES.**
- **AUTOMATIC, SEMI-AUTOMATIC& MANUAL GRADE.**
- **MULTI PRODUCT PROCESSING PLANT**
- **REQUIRED SPACE: 1000 SQ.FT. - 2000 SQ.FT. APPROX.**
- **ELECTRIC LOAD: 5HP-50HP APPROX.**
- **WE ALSO PROVIDE YOU THE FOOD CONSULTANT FOR DEVELOPING OF YOUR PRODUCTS.**



MORE INFO



www.packaging-solutionsindia.com



+919818293306, +919310352152



packagingsolutionindia@gmail.com

FRUIT PULP PROCESSING PLANT

SPECIFICATIONS

- **CAPACITY: 100-5TON KG/HR (ACCORDING TO THE REQUIREMENTS OF OUR VALUEABLE CLIENTS)**
- **COMPLETE PROCESSING LINE UPTO PACKAGING MACHINES.**
- **AUTOMATIC, SEMI-AUTOMATIC & MANUAL GRADE.**
- **MULTI PRODUCT PROCESSING PLANT**
- **REQUIRED SPACE: 1000 SQ.FT. - 4500 SQ.FT. APPROX.**
- **ELECTRIC LOAD: 8HP-70HP APPROX.**
- **WE ALSO PROVIDE YOU THE FOOD CONSULTANT FOR DEVELOPING OF YOUR PRODUCTS.**



MORE INFO



www.packaging-solutionsindia.com



+919818293306, +919310352152



packagingsolutionindia@gmail.com

PICKLE PROCESSING

UNIT

SPECIFICATIONS



- **CAPACITY: 200-500 KG/HR (ACCORDING TO THE REQUIREMENTS OF OUR VALUABLE CLIENTS)**
- **COMPLETE PROCESSING LINE UPTO PACKAGING MACHINES.**
- **AUTOMATIC, SEMI-AUTOMATIC & MANUAL GRADE.**
- **MULTI PRODUCT PROCESSING PLANT**
- **REQUIRED SPACE: 1000 SQ.FT. - 2000 SQ.FT. APPROX.**
- **ELECTRIC LOAD: 5HP-10HP APPROX.**
- **WE ALSO PROVIDE YOU THE FOOD CONSULTANT FOR DEVELOPING OF YOUR PRODUCTS.**



MORE INFO



www.packaging-solutionsindia.com



+919818293306, +919310352152



packagingsolutionindia@gmail.com

TUTTI FRUITY PROCESSING PLANT



SPECIFICATIONS

- **CAPACITY: 1TON-5TON KG/DAY (ACCORDING TO THE REQUIREMENTS OF OUR VALUABLE CLIENTS)**
- **COMPLETE PROCESSING LINE UPTO PACKAGING MACHINES.**
- **AUTOMATIC, SEMI-AUTOMATIC & MANUAL GRADE.**
- **MULTI PRODUCT PROCESSING PLANT**
- **REQUIRED SPACE: 1000 SQ.FT. - 4500 SQ.FT. APPROX.**
- **ELECTRIC LOAD: 8HP-70HP APPROX.**
- **WE ALSO PROVIDE YOU THE FOOD CONSULTANT FOR DEVELOPING OF YOUR PRODUCTS.**



MORE INFO



www.packaging-solutionsindia.com



+919818293306, +919310352152



packagingsolutionindia@gmail.com

FRUIT JAM PROCESSING PLANT

SPECIFICATIONS

- **CAPACITY: 200-5TON KG/HR (ACCORDING TO THE REQUIREMENTS OF OUR VALUABLE CLIENTS)**
- **COMPLETE PROCESSING LINE UPTO PACKAGING MACHINES.**
- **AUTOMATIC, SEMI-AUTOMATIC& MANUAL GRADE.**
- **MULTI PRODUCT PROCESSING PLANT**
- **REQUIRED SPACE: 1000 SQ.FT. - 4500 SQ.FT. APPROX.**
- **ELECTRIC LOAD: 8HP-70HP APPROX.**
- **WE ALSO PROVIDE YOU THE FOOD CONSULTANT FOR DEVELOPING OF YOUR PRODUCTS.**



MORE INFO



www.packaging-solutionsindia.com



+919818293306, +919310352152



packagingsolutionindia@gmail.com

STEAM JACKETED TILTING TYPE KETTLE



SPECIFICATIONS:-

- **AUTOMATION GRADE: SEMI-AUTOMATIC**
- **CAPACITY-25, 50, 100 GALLONS (100, 225, 450LTRS.)**
- **THE JACKET AND PAN ARE MADE UP OF SS-304**
- **AVAILABLE IN BOTH MILD STEEL & STAINLESS STEEL FRAME**
- **COMPLETE WITH PRESSURE GAUGE, SAFETY VALVE, STEAM TRAP**
- **THE KETTLES ARE DOUBLE-JACKETED FOR MAXIMUM STEAM UTILIZATION AND EFFICIENCY.**



MORE INFO



+91 9818293306



packagingsolutionindia@gmail.com



www.packaging-solutionsindia.com

STEAM JACKETED FIXED TYPE KETTLE

SPECIFICATIONS:-

- CAPACITY-25, 50, 100 GALLONS
(100, 225, 450LTRS.)
- AUTOMATION GRADE:
AUTOMATIC
- THE JACKET AND PAN ARE MADE
UP OF SS-304
- MOUNTED ON STAINLESS STEEL
LEGS
- EQUIPPED WITH TEFLON
SCRAPPER FITTED WITH GEARED
MOTOR
- COMPLETE WITH PRESSURE
GAUGE, SAFETY VALVE, STEAM
TRAP
- THE KETTLES ARE DOUBLE-
JACKETED FOR MAXIMUM STEAM
UTILIZATION AND EFFICIENCY.



MORE INFO



+91 9818293306



packagingsolutionindia@gmail.com



www.packaging-solutionsindia.com

ELECTRIC KETTLE

SPECIFICATIONS:-

- CAPACITY-25, 50, 100 GALLONS (100, 225, 450LTRS.)
- THERMIC FLUID OIL HEATING, OIL FILLED IN THE JACKET.
- EQUIPPED WITH ELECTRIC HEATERS.
- ELECTRIC CONTROL PANEL EQUIPPED WITH DIGITAL TEMPERATURE CONTROLLER CUM SENSOR.
- MOUNTED ON MILD STEEL OR STAINLESS STEEL STAND WITH TILTING ARRANGEMENT THROUGH WORM GEAR/PINION.
- TRIPLE JACKETED 1ST JACKET MADE OF 2.5MM, 2ND JACKET MADE OF 2MM, AND 3RD JACKET 1.5MM FOR GLASS WOOL INSULATION



MORE INFO



+91 9818293306



packagingsolutionindia@gmail.com



www.packaging-solutionsindia.com

LPG HEATING OIL JACKETTED KETTLE

SPECIFICATIONS:-

MOUNTED ON A MILD STEEL
STAND WITH TILTING
ARRANGEMENT THROUGH
WORM GEAR/PINION.
JACKET AND PAN MADE OF
12/14 & 10/12 SWG. SS-304.
COMPLETE WITH SCRAPER
AND GEARED MOTOR.
COMPLETE WITH THERMIC
FLUID OIL FILLED IN THE
JACKET.
CAPACITY: 50 TO 450
LITERS



www.packaging-solutionsindia.com



+919818293306



packagingsolutionindia@gmail.com

FRUIT PULPER

SPECIFICATIONS

- **CAPACITY: 50-2000 KG/HR**
- **STAGES: SINGLE**
- **AUTOMATION GRADE: SEMI-AUTOMATIC**
- **THE CONTACT PART MADE OF STAINLESS STEEL 304**
- **MOUNTED ON A MILD STEEL FRAME**
- **VOLTAGE: 220V/440V**
- **ELECTRICITY PHASE: 3PHASE**
- **SUITABLE FOR: TOMATO, MANGO, APPLE, ORANGE, ETC.**



MORE INFO



www.packaging-solutionsindia.com



+919818293306, +919310352152



packagingsolutionindia@gmail.com

FRUIT PULPER

SPECIFICATIONS

- **CAPACITY: 50-2000 KG/HR**
- **STAGES: SINGLE**
- **AUTOMATION GRADE: SEMI-AUTOMATIC**
- **THE CONTACT PART MADE OF STAINLESS STEEL 304**
- **MOUNTED ON A STAINLESS-STEEL FRAME.**
- **VOLTAGE: 220V/440V**
- **ELECTRICITY PHASE: 3PHASE**
- **SUITABLE FOR: TOMATO, MANGO, APPLE, ORANGE, ETC.**



MORE INFO



www.packaging-solutionsindia.com



+919818293306, +919310352152



packagingsolutionindia@gmail.com

TWIN PULPER

SPECIFICATIONS

- **CAPACITY: 200-5000 KG/HR**
- **STAGES: DOUBLE**
- **AUTOMATION GRADE: AUTOMATIC**
- **THE CONTACT PART MADE OF STAINLESS STEEL 304**
- **MOUNTED ON A MILD STEEL FRAME.**
- **VOLTAGE: 220V/440V**
- **ELECTRICITY PHASE: 3PHASE**
- **SUITABLE FOR: TOMATO, MANGO, APPLE, ORANGE, ETC.**



MORE INFO



www.packaging-solutionsindia.com



+919818293306, +919310352152



packagingsolutionindia@gmail.com

TWIN PULPER

SPECIFICATIONS

- **CAPACITY: 200-5000 KG/HR**
- **STAGES: DOUBLE**
- **AUTOMATION GRADE: AUTOMATIC**
- **THE CONTACT PART MADE OF STAINLESS STEEL 304**
- **MOUNTED ON A STAINLESS-STEEL FRAME.**
- **VOLTAGE: 220V/440V**
- **ELECTRICITY PHASE: 3PHASE**
- **SUITABLE FOR: TOMATO, MANGO, APPLE, ORANGE, ETC.**



MORE INFO



www.packaging-solutionsindia.com



+919818293306, +919310352152



packagingsolutionindia@gmail.com

FRUIT & VEGETABLE BATCH WASHER



SPECIFICATIONS

- BATCH TYPE BUBBLE WASHER
- CAPACITY: 100-200KG/HR
- MATERIAL OF CONSTRUCTION: STAINLESS STEEL-304
- EQUIPPED WITH 1HP AIR BLOWER
- WATER JET SPRAYS ATTACHED ON THE TOP FOR PROPER CLEANING
- PERFORATED BASKET WITH TILTING-TYPE ARRANGEMENT
- INCLUDED WITH 0.5HP WATER PUMP
- ATTACHED WITH WATER DRAIN SYSTEM

MORE INFO



www.packaging-solutionsindia.com



+919818293306, +919310352152



packagingsolutionindia@gmail.com

FRUIT & VEGETABLE CONVEYOR WASHER



SPECIFICATIONS:-

- CAPACITY: 200-5000 KG/HR
- BUBBLE-TYPE WASHER WITH AIR BLOWER
- SPECIALLY DESIGNED TO WASH ALL TYPES OF FRUIT & VEGETABLES
- COMPLETELY MADE UP OF SS 304
- EQUIPPED WITH MODULAR CONVEYOR WHICH IS RUNNING IN DEEP WATER
- IT ALSO HAS FOOD GRADE BELT
- VARIABLE SPEED DRIVE TO CONTROL THE SPEED
- ATTACHED WITH FRESH WATER JET SPRAY
- WATER FILTRATION SYSTEM WITH WATER RECIRCULATION



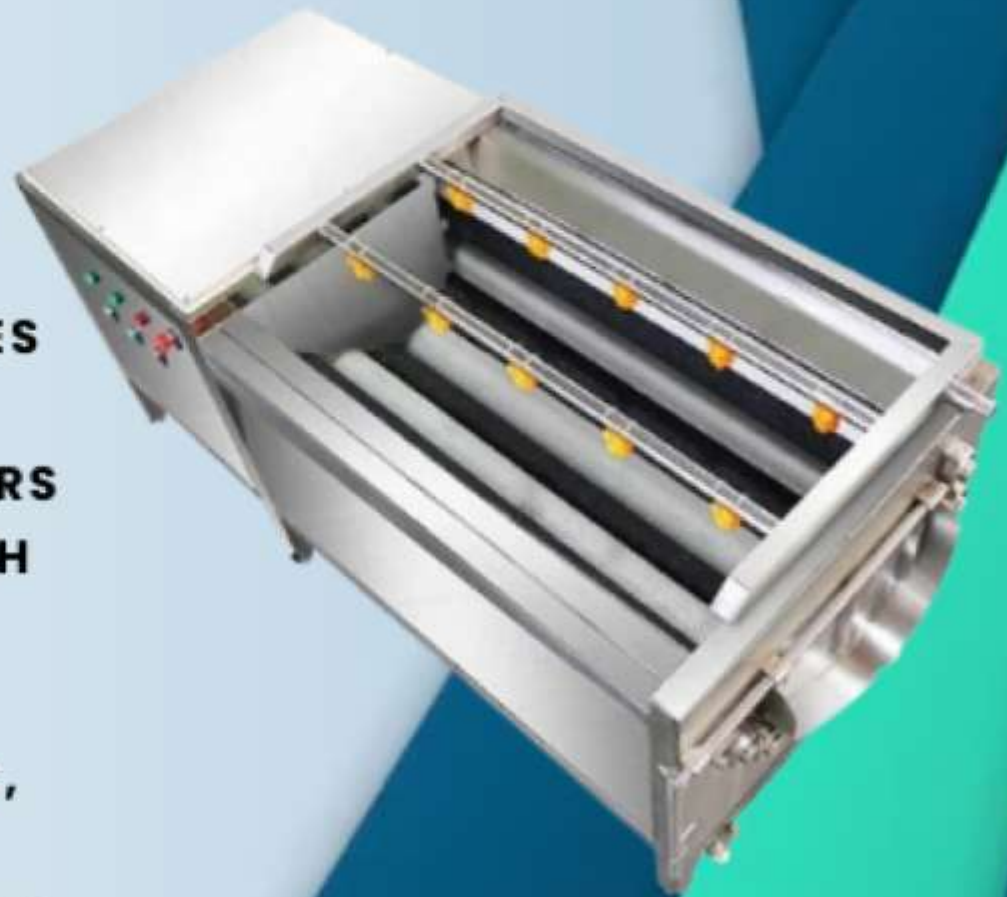
MORE INFO

VIDEO LINK:
[HTTPS://YOUTU.BE/L-FZBAFRKH8](https://youtu.be/L-FZBAFRKH8)

FRUIT & VEGETABLE WASHER CUM PEELER

SPECIFICATIONS

- CAPACITY: 200-500 KG/HR
- COMPLETELY MADE UP OF STAINLESS STEEL
- THE WASHER IS FITTED WITH WATER SPRAY JET ARRANGEMENT
- EQUIPPED WITH ROTATING SOFT/HARD BRUSHES WHICH THOROUGHLY CLEAN THE VEGETABLES
- UNIQUE DESIGN WHICH WASHES & PEELS THE VEGETABLE
- ATTACHED WITH BRUSH ROLLERS
- SUITABLE TO PEEL/CLEAN WASH VARIOUS VEGETABLES LIKE RADISH, ONION, CARROTS, POTATOES, GINGER, TURMERIC, STEM ROOTS ETC



www.packaging-solutionsindia.com

MORE INFO



+919818293306, +919310352152



packagingsolutionindia@gmail.com

FRUIT CRUSHER

SPECIFICATIONS

- **CAPACITY: 50-5000 KG/HR**
- **AUTOMATION GRADE: AUTOMATIC**
- **THE CONTACT PART MADE OF STAINLESS STEEL 304**
- **MOUNTED ON A STAINLESS-STEEL/ MILD STEEL FRAME.**
- **VOLTAGE: 220V/440V**
- **ELECTRICITY PHASE: 1/3PHASE**
- **SUITABLE FOR: TOMATO, APPLE, PINEAPPLE, ETC.**



MORE INFO

www.packaging-solutionsindia.com



+919818293306, +919310352152



packagingsolutionindia@gmail.com

FRUIT CRUSHER

SPECIFICATIONS

- **CAPACITY: 50-5000 KG/HR**
- **AUTOMATION GRADE: AUTOMATIC**
- **THE CONTACT PART MADE OF STAINLESS STEEL 304**
- **MOUNTED ON A STAINLESS-STEEL/ MILD STEEL FRAME.**
- **VOLTAGE: 220V/440V**
- **ELECTRICITY PHASE: 1/3PHASE**
- **SUITABLE FOR: TOMATO, APPLE, PINEAPPLE, ETC.**



MORE INFO

www.packaging-solutionsindia.com



+919818293306, +919310352152



packagingsolutionindia@gmail.com

DOUBLE SEAMER



(CAN STILL TYPE PSS139)

SPECIFICATIONS:-

HIGH-SPEED "CAN STILL TYPE" SEAMER.

SUITABLE FOR SEAMING CANS BETWEEN 202-700 DIA RANGES, EQUIPPED WITH 2HP 1440 RPM MOTOR AND STARTER.

(CAPACITY APPROX. 2000 CANS/HRS.)

SEAMING CHUCKS, SEAMING ROLLERS



www.packaging-solutionsindia.com



+919818293306



packagingsolutionindia@gmail.com

DOUBLE SEAMER

(PSS140 CAN STILL TYPE)

SPECIFICATIONS:-

- CAPACITY: 30-35 CANS/MIN
- CAN SEAMING RANGE: 202-700 DIA
- THE COMPLETE BODY IS MADE UP OF GRADED CAST IRON
- SEAMING OPERATION IS FULLY AUTOMATIC AFTER THE CAN IS PLACED AND THE PEDAL IS PUSHED.
- THE SEAMING HEAD WITH ROLLER ROTATES THUS SEAM THE CAN PERFECTLY.
- HIGH-SPEED SEAMER STURDILY BUILT AND VERY ROBUST CONSTRUCTION



MORE INFO



+91 9818293306



packagingsolutionindia@gmail.com



www.packaging-solutionsindia.com

DOUBLE SEAMER **PSS138 1ADS TYPE**

SPECIFICATIONS

- **CAPACITY: 15-20 CANS/MIN**
- **CAN SEAMING RANGE: 202-700 DIA**
- **THE COMPLETE BODY IS MADE UP OF GRADED CAST IRON**
- **SEAMING OPERATION IS FULLY AUTOMATIC AFTER THE CAN IS PLACED AND THE PEDAL IS PUSHED.**
- **THE SEAMING HEAD WITH ROLLER ROTATES THUS SEAM THE CAN PERFECTLY.**
- **HIGH-SPEED SEAMER STURDILY BUILT AND VERY ROBUST CONSTRUCTION**



MORE INFO



www.packaging-solutionsindia.com



+919818293306, +919310352152



packagingsolutionindia@gmail.com

TREADLE LID EMBOSSING



SPECIFICATIONS:-

**DESIGNED TO EMBOSS
LIDS WITHOUT
PIERCING THE LID.
WITH ONE SET OF
DOUBLE ROW DIE
HOLDERS. (WITHOUT
AL PHABETS &
NUMERALS)**



www.packaging-solutionsindia.com



+919818293306



packagingsolutionindia@gmail.com

HAND FLANGER



SPECIFICATIONS:-

**COMPLETE WITH
FLANGING DIA AND
ADOPTER PLATE
SUITABLE FOR FLANGING
ROUND CANS BODIES OF
301-700DIA RANGE AND 1-
1/2"-10" HEIGHT
FLANGING DIES WITH
RINGS**



www.packaging-solutionsindia.com



+919818293306



packagingsolutionindia@gmail.com

ROUND CAN BODY BEADER



SPECIFICATIONS:-

SUITABLE FOR 301,
401, 603DIA CAN SIZE
BEADING. EQUIPPED
WITH 1HP 3PH MOTOR.
THE PURPOSE OF
BEADING A CAN IS TO
PROVIDE EXTRA
STRENGTH TO THE
CAN THUS AVOIDING
DENTS IN THE CAN
WHILE STORAGE.



www.packaging-solutionsindia.com



+919818293306



packagingsolutionindia@gmail.com

CANNING RETORT



SPECIFICATIONS:-

VERTICAL TYPE CAPACITY
280/300 A21/2 CANS. COMPLETE
MADE OF M.S. & S.S. WITH
PRESSURE GAUGE, METAL CLAD
THERMOMETER, SAFETY VALVE
AND RELEASE VALVE.

SUITABLE FOR STERILIZATION
OF CANS AFTER SEAMING. THE
CAN IS PLACED IN THE CRATE
WHICH IS THEN FED INTO THE
RETORT AND SUBJECTED TO
HIGH PRESSURE AND
TEMPERATURE THUS
STERILIZING THE CONTENTS.



www.packaging-solutionsindia.com



+919818293306



packagingsolutionindia@gmail.com

HELICOLIDAL JUICE EXTRACTOR

SPECIFICATIONS:-

- SPECIALLY DESIGNED TO EXTRACT JUICE FROM THE SOFT AS WELL AS HARD FRUITS LIKE LEMON, APPLE, PINEAPPLE, AMLA, ORANGE, POMEGRANATE ETC.
- COMPLETE WITH MOTOR,
- ALL CONTACT PARTS ARE MADE OF SS-304
- CAPACITY: 100-500KG/HR
- UNIQUE SPIRAL DESIGN OF THE MACHINE



MORE INFO



+919818293306, +919310352152



packagingsolutionindia@gmail.com

HYDRAULIC JUICE PRESS

SPECIFICATIONS:-

DEVELOPING PRESSURE TO JUICE SOFT AS WELL AS HARD SUCH AS POMEGRANATE, GRAPES, APPLE, PINEAPPLE, AMLA ETC. RACK MADE OF SEASONED TEAK WOOD.

EQUIPPED WITH SUITABLE MOTOR AND HYDRAULIC PUMP WITH AUTOMATIC PRESSURE CONTROL (WITHOUT RACK AND CLOTH).

CAPACITY-100-250KGS/HRS.
FOR 25 & 40 TONES PRESSURE
COMPLETE MADE OF M.S.
COMPLETE WITH 4NOS.
HYDRAULIC CLOTH AND 4NOS.
WOODEN RACK



www.packaging-solutionsindia.com



+919818293306



packagingsolutionindia@gmail.com

SCREW TYPE JUICE EXTRACTOR



SPECIFICATIONS:-

CAPACITY 50-100
PIECES PER
HOUR. CONTACT
PARTS ARE MADE
OF ALUMINIUM
AND ONE SIEVE
OF STAINLESS
STEEL. EQUIPPED
WITH 0.5HP & 1
HP MOTOR



www.packaging-solutionsindia.com



+919818293306



packagingsolutionindia@gmail.com

HIGH SHEAR HOMOGENISER

SPECIFICATIONS:-

- CAPACITY 200-500LPH
- DOUBLE-STAGE, INLINE
HOMOGENIZER
- SPECIALLY DESIGNED TO
HOMOGENIZE MAYONNAISE,
SAUCE THROUGH AN INSIDE
SHEAR BLENDING SYSTEM
- COMPLETELY MADE UP OF
STAINLESS STEEL
- EQUIPPED WITH ROTOR-
STATOR MIXER
- PURPOSE: TO HOMOGENIZE
AND FINE THE LIQUID
PARTICLES IN AN EVEN FORM.



MORE INFO



+919818293306, +919310352152



packagingsolutionindia@gmail.com

HIGH-PRESSURE HOMOGENIZER

SPECIFICATIONS:-

- **DOUBLE-STAGE HOMOGENIZER**
- **CAPACITY: 100-1000 LPH**
- **SPECIALLY DESIGNED TO MIX AND HOMOGENIZE ALL KINDS OF LIQUIDS AND SEMI-LIQUIDS THROUGH THE PRESSURE OF PISTONS.**
- **NO. OF PLUNGER: 3**
- **MOC OF PLUNGER: AISI 304**
- **HOMOGENIZER SPEED: 235 STROKE PER MINUTE**
- **DRIVE MECHANISM: DIRECT BELT DRIVE**
- **PRESSURE GAUGE: FLAT DIAPHRAGM TYPE (0-400KG/CM²)**
- **OIL WINDOW: PROVIDED OIL WINDOW SHOWS THE LEVEL OF OIL IN THE CRANK CASE.**
- **SEALS: HIGH-QUALITY TEFLON SEALS**
- **TOOL KIT: A TOOL KIT SHALL BE PROVIDED ALONG WITH THE EQUIPMENT.**



MORE INFO



+919818293306, +919310352152



packagingsolutionindia@gmail.com

MULTIFUNCTIONAL VEGETABLE CUTTER



SPECIFICATIONS:-

SPECIALLY DESIGNED TO CUT FRUITS & VEGETABLES IN DESIRED SHAPE & SIZE WITH SLICING, ATTACHMENT OF DICING SHREDDING AND FINGER IN ONE SINGLE MACHINE WITH CONVEYOR SYSTEM COMPLETE WITH MOTO.

COMPLETE MADE OF STAINLESS STEEL.

CAPACITY: 100-300KGS/HR.



MORE INFO



+91 [9818293306](tel:9818293306)



packagingsolutionindia@gmail.com



www.packaging-solutionsindia.com

VEGETABLE SLICER/CUTTER

SPECIFICATIONS

- **CAPACITY: 100-200 KG/HR MATERIAL OF CONSTRUCTION: STAINLESS STEEL SPECIALLY DESIGNED TO MAKE SLICES, DICE, AND SHRED FROM VEGETABLE EQUIPPED WITH 1HP MOTOR. ATTACHED WITH 3 BLADES AUTOMATION GRADE**



MORE INFO



www.packaging-solutionsindia.com



+919818293306, +919310352152



packagingsolutionindia@gmail.com

PINEAPPLE SLICER



SPECIFICATIONS:-

**EQUIPPED WITH
1HP MOTOR,
CAPACITY-200-
500KGS/HRS.
MADE OF SS.
SPECIALLY
DESIGNED TO
MAKE SLICES
FROM PINEAPPLE.**



www.packaging-solutionsindia.com



+919818293306



packagingsolutionindia@gmail.com

PINEAPPLE CORING & PEELING MACHINE



SPECIFICATIONS:-

SPECIALLY DESIGNED TO PEEL AND REMOVING OF CORE, PNEUMATICALLY OPERATED YOU HAVE TO PLACE PINEAPPLE ONE BY ONE ON THE DIE AND PRESS PADDLE. YOU HAVE TO CHANGE THE DIE ACCORDING TO THE SIZE OF PINEAPPLE 75MM,85MM,95MM,100 MM.



www.packaging-solutionsindia.com



+919818293306



packagingsolutionindia@gmail.com

DICING & CUBING MACHINE

SPECIFICATIONS:-

- CAPACITY: 300KG/HR
- ELECTRICALLY OPERATED
- AUTOMATION GRADE: AUTOMATIC
- MOUNTED ON A SUITABLE STAINLESS STEEL FRAME
- CUBE-CUTTING SIZES 5MM TO 20MM THICKNESS
- ALUMINUM HOPPER WHICH COMES IN CONTACT WITH A CYLINDRICAL CUTTER
- PROVIDED WITH S.S BLADES WHICH CUT THE RAW



MORE INFO



+91 9818293306



packagingsolutionindia@gmail.com



www.packaging-solutionsindia.com

FRUITS & VEGETABLE DICING & CUBING MACHINE

SPECIFICATIONS:-

FRUITS & VEGETABLE DICING & CUBING MACHINE:-MOUNTED ON A SUITABLE STAINLESS STEEL FRAME. ELECTRICALLY OPERATED, FITTED WITH 1HP. CUBE CUTTING SIZES 5MM TO 20MM THICKNESS FED FROM S.S HOPPER WHICH COMES IN CONTACT WITH CYLINDRICAL CUTTER PROVIDED WITH S.S BLADES CUTS THE RAW. CAPACITY 800-1000KG/HR.



www.packaging-solutionsindia.com



+919818293306



packagingsolutionindia@gmail.com

LEMON CUTTER

SPECIFICATIONS:-

- FOUR CIRCULAR KNIVES OF HIGH CARBON STEEL WHICH ROTATES IN THE SAME DIRECTION TOWARDS THE CENTRE AND OVER WHICH COMES A FEED HOPPER OF SUIT VARIOUS SIZES OF LIMES.
- SIZE FEEDERS OF 1.5", 2" AND 3" DIA.
- FOUR MOTORS ALL OF 0.5 HP 1440 RPM.
- THE TOP HOPPER COVER THROUGH WHICH THE LIMES ARE FED IS MADE OF STAINLESS STEEL.
- CAPACITY 150-200KG \ HR.



MORE INFO



+919818293306, +919310352152



packagingsolutionindia@gmail.com

RAW MANGO CUTTING MACHINE

SPECIFICATIONS:-

RAW MANGO WOULD BE CUT INTO 4 & 8 PIECE, WHEN IT PASSED THROUGH A SET OF CIRCULAR CUTTERS & A SET OF CROSS CUTTERS ROTATING AT VERY HIGH SPEED WHERE IF IS CUT IN TO SMALL PIECES. SLOPING DRAINS KNIFES USED REFITTED AFTER SHARP ENDING ELECTRIC MOTOR 3 PHASE 1440 RPM.
CAPACITY 300-500KG \ HR.



MORE INFO



www.packaging-solutionsindia.com



+919818293306



packagingsolutionindia@gmail.com

PICKLE MIXER/BLENDER



SPECIFICATIONS:-

- CAPACITY-25-500 KG/BATCH
- ALL CONTACT PARTS ARE MADE OF STAINLESS STEEL-304
- U-SHAPE CHAMBER WITH ROTATION BLADES, WHICH TURN AND MIX THE PRODUCT INSIDE.
- MOUNTED ON MS FRAME.
- THE DRUM IS TILTING FOR EASY REMOVAL OF PRODUCT.
- EQUIPPED WITH MOTOR AND REDUCTION GEARBOX.



MORE INFO



+919818293306, +919310352152



packagingsolutionindia@gmail.com

GINGER, POTATO & ONION PEELER



SPECIFICATIONS:-

**MOUNTED ON MS
FRAME, MADE OF SS,
CHAMBER WALLS
COVERED WITH
CARBORUNDUM.
CAPACITY APPROX.
20-50KGS/HRS.**



www.packaging-solutionsindia.com



+919818293306



packagingsolutionindia@gmail.com

PISTON FILLER



SPECIFICATIONS:-

**TWO HEAD PISTON
FILLER FITTED
WITH 1HP/3PH
MOTOR, GEARBOX.
CAN FILL TWO
BOTTLES/CANS.
USEFUL TO FILL
PET JARS/HDPE
ETC.
FILLING RANGE
200-1000 ML**



www.packaging-solutionsindia.com



+919818293306



packagingsolutionindia@gmail.com

810(L) AUTOMATIC FORM FILL SEAL MACHINE



SPECIFICATIONS:-

- **FULLY AUTOMATIC FORM FILL SEAL MACHINE**
- **FILLING RANGE-8GMS**
- **SPEED-25-30PPM**
- **OPERATION: A VOLUMETRIC SYSTEM OF WEIGHING, CONDUCTING INTEGRATED OPERATIONS FROM MEASURING, POUCH MAKING, FILLING, AND SEALING OF POUCHES**
- **SUITABLE TO PACK PICKLE PASTE, JAM, AND KETCHUP ANY FREE-HOMING LIQUID**
- **FITTED WITH A POSITIVE DISPLACEMENT PUMP THAT SUCKS THE REQUIRED QUANTITY AND FILLS IN THE POUCH**
- **COMPLETE WITH CONTROL PANEL**



MORE INFO

BAND SEALER



SPECIFICATIONS:-

IT IS HIGHLY VERSATILE
HIGH SPEED SEALING
MACHINE MEANT FOR
CONTINUES OPERATION TO
SEAL ALL TYPES OF POUCHES
MADE OUT OF LAMINATES OR
VIRGIN FILMS. RELIABLE
BAND SEALING PRINCIPLE
PRODUCES CONSISTENTLY
STRONG AND EFFICIENT
SEALING. THE CONVEYOR CAN
BE ADJUSTED UP AND DOWN
AS PER THE SIZE OF THE
POUCH. THE BAND SEALER
CAN BE LINKED WITH SEMI-
AUTOMATIC FILLING. SPEED
10 TO 25 BAGS/MIN



www.packaging-solutionsindia.com



+919818293306



packagingsolutionindia@gmail.com

BATCH & UHT PASTEURIZER



SPECIFICATIONS:-

MOUNTED ON A SS LEGS. TRIPLE JACKETED, 1ST JACKET MADE OF 2MM, 2ND JACKET MADE OF 1.5MM AND 3RD JACKET MADE OF 1.5MM WITH INSULATION. COMPLETE MADE OF SS-304 STAINLESS STEEL. COMPLETE WITH ELECTRIC CONTROL PANEL, DIGITAL TEMP. CONTROLLER, HEATERS OF 2KW, EQUIPPED WITH 0.5HP/3PH 440V GEARED MOTOR FOR AGITATOR.

MOUNTED ON A SS LEGS. TRIPLE JACKETED, 1ST JACKET MADE OF 3MM, 2ND JACKET MADE OF 2MM AND 3RD JACKET MADE OF 1.6MM WITH INSULATION. COMPLETE MADE OF SS-304 STAINLESS STEEL. COMPLETE WITH ELECTRIC CONTROL PANEL, DIGITAL TEMP. CONTROLLER, HEATERS OF 6KW, EQUIPPED WITH 1HP/3PH 440V GEARED MOTOR FOR AGITATOR.

MOUNTED ON A SS LEGS. TRIPLE JACKETED, 1ST JACKET MADE OF 3MM, 2ND JACKET MADE OF 3MM AND 3RD JACKET MADE OF 2MM WITH INSULATION. COMPLETE MADE OF SS-304 STAINLESS STEEL. COMPLETE WITH ELECTRIC CONTROL PANEL, DIGITAL TEMP. CONTROLLER, HEATERS OF 12KW, EQUIPPED WITH 1HP/3PH 440V GEARED MOTOR FOR AGITATOR.



www.packaging-solutionsindia.com



+919818293306



packagingsolutionindia@gmail.com

BLANCHING **EQUIPMENT**



SPECIFICATIONS:-

MOUNTED ON A S.S LEGS, SIZE OF TANK 2'X2'X2 MADE OF SS-304 STAINLESS STEEL. COMPLETE WITH ELECTRIC HEATING SYSTEM, ELECTRIC CONTROL PANEL, DIGITAL TEMPERATURE CONTROLLER CUM INDICATOR AND WATER OUTLET AND ONE PERFORATED BUCKET.

MOUNTED ON A S.S LEGS, SIZE OF TANK 4'X4'X2' MADE OF SS-304 STAINLESS STEEL. COMPLETE WITH STEAM INLET AND WATER OUTLET AND WITH FOUR BASKETS.



www.packaging-solutionsindia.com



+919818293306



packagingsolutionindia@gmail.com

ELECTRIC TRAY DRYER

SPECIFICATIONS:-

- ELECTRICALLY OPERATED
- CAPACITY: 20-250 KG/BATCH
- NO. OF TRAYS: 6-96 TRAYS
- TEMPERATURE RANGE: 50-250°C
- TRAY MADE UP OF ALUMINIUM
- TRAY SIZE: 16"X32"X1.25"
- EQUIPPED WITH ELECTRIC HEATERS
- DOUBLE-WALLED INNER & OUTER BODY MADE OF MILD STEEL
- EQUIPPED WITH TEMPERATURE CONTROLLER CUM INDICATOR
- INSULATED WITH GLASS WOOL



MORE INFO

www.packaging-solutionsindia.com



+919818293306, +919310352152



packagingsolutionindia@gmail.com

ELECTRIC TRAY DRYER

SPECIFICATIONS:-

- ELECTRICALLY OPERATED
- CAPACITY: 20-250 KG/BATCH
- NO. OF TRAYS: 6-96 TRAYS
- TEMPERATURE RANGE: 50-250°C
- TRAY MADE UP OF ALUMINIUM
- TRAY SIZE: 16"X32"X1.25"
- EQUIPPED WITH ELECTRIC HEATERS
- DOUBLE-WALLED INNER & OUTER BODY MADE OF MILD STEEL
- EQUIPPED WITH TEMPERATURE CONTROLLER CUM INDICATOR
- INSULATED WITH GLASS WOOL



MORE INFO

www.packaging-solutionsindia.com



+919818293306, +919310352152



packagingsolutionindia@gmail.com

ELECTRIC TRAY DRYER

SPECIFICATIONS:-

- ELECTRICALLY OPERATED
- CAPACITY: 20-250 KG/BATCH
- NO. OF TRAYS: 6-96 TRAYS
- TEMPERATURE RANGE: 50-250°C
- TRAY MADE UP OF ALUMINIUM
- TRAY SIZE: 16"X32"X1.25"
- EQUIPPED WITH ELECTRIC HEATERS
- DOUBLE-WALLED INNER & OUTER BODY MADE OF MILD STEEL
- EQUIPPED WITH TEMPERATURE CONTROLLER CUM INDICATOR
- INSULATED WITH GLASS WOOL



MORE INFO

www.packaging-solutionsindia.com



+919818293306, +919310352152



packagingsolutionindia@gmail.com

ELECTRIC TRAY DRYER

SPECIFICATIONS:-

- ELECTRICALLY OPERATED
- CAPACITY: 20-250 KG/BATCH
- NO. OF TRAYS: 6-96 TRAYS
- TEMPERATURE RANGE: 50-250°C
- TRAY MADE UP OF ALUMINIUM
- TRAY SIZE: 16"X32"X1.25"
- EQUIPPED WITH ELECTRIC HEATERS
- DOUBLE-WALLED INNER & OUTER BODY MADE OF MILD STEEL
- EQUIPPED WITH TEMPERATURE CONTROLLER CUM INDICATOR
- INSULATED WITH GLASS WOOL



MORE INFO

www.packaging-solutionsindia.com



+919818293306, +919310352152



packagingsolutionindia@gmail.com

CENTRIFUGAL/HYDRO DRYING MACHINE



SPECIFICATIONS:-

- TO REMOVE EXCESS SURFACE WATER FROM PULSES ETC. BY CENTRIFUGAL SYSTEM BEFORE FRYING ALL CONTACT PARTS MADE OF SS304 COMPLETE WITH ELECTRIC MOTOR, V-BELTS
- CAPACITY: 50- 200 KG. PER HOUR
- MADE OF: STAINLESS STEEL, ALUMINUM, IRON
- SPECIALTY: WITH PULLEY BELTS AND WORKING WITH CENTRIFUGAL FORCE



MORE INFO



+919818293306, +919310352152



packagingsolutionindia@gmail.com

VACUUM EVAPORATED KETTLE



SPECIFICATIONS:-

SPECIALLY DESIGNED TO MAKE JAM. ALL CONTACT PARTS ARE MADE OF STAINLESS STEEL-304. DOUBLE JACKETED TANK, 1ST JACKET MADE OF 4MM AND OUTER JACKET MADE OF 3MM, IN BETWEEN THE BOTH JACKETES STEAM WOULD BE FLUSH THROUGH STEAM BOILER SYSTEM TO THE DESIRED TEMPERATURE. TOP CLOSED TYPE BUT OPENABLE BY THE BOLTS FOR MAINTENANCE, TOP & BOTTOM DISH END TYPE, ON THE TOP A MAIN HOLE WITH SIGHT GLASS, ONE MAIN HOLE IS PROVIDED FOR FEEDING THE RAW MATERIAL AND CLEANING.

PAN HOLDING CAPACITY 200KGS. BATCH CAPACITY-100KGS. COMPLETE WITH ELECTRIC LOAD 1HP/3PH WITH AGITATOR FOR MIXING AND WATER RING TYPE VACUUM PUMP.



www.packaging-solutionsindia.com



+919818293306



packagingsolutionindia@gmail.com

STRAIGHT LINE EXHAUST BOX



SPECIFICATIONS:-

CAPABLE OF PASSING 2 A2! /2 CANS AT A TIME. BOTTOM AND COVER OF ALUMINIUM. SPEED OF EXHAUST BOX IS ADJUSTABLE IN THREE-DESIRED SPEED.

SUITABLE FOR EXHAUSTING AIR OUT OF FILLED CAN BEFORE SEALING. MADE OF ALUMINIUM COVER TOP/BOTTOM. THE CAN IS CONVEYED BY MEANS OF S.S SLAT CHAIN CONVEYOR. THE EXHAUST COMES WITH 3 VARIABLE SPEED OPTIONS DEPENDING UPON PRODUCT TO BE EXHAUSTED.

12, 18' (WITH S.S. SLAT CHAIN)



www.packaging-solutionsindia.com



+919818293306



packagingsolutionindia@gmail.com

JUICE/PULP PASTEURISER



SPECIFICATIONS:-

SHELL AND TUBE TYPE JUICE PASTEURIZER, ALL CONTACT PARTS ARE MADE OF STAINLESS STEEL SS-304. MOUNTED ON S.S FRAME IN FIRST CHAMBER PRODUCT WOULD FLOW IN INNER TUBES AND IN OUTER CHAMBER STEAM WOULD BE FLOW FOR MAXIMUM UTILIZATION OF HEAT TO JUICES WHICH BRING THE TEMP. OF JUICE UPTO 90 DEGREE AND THEN JUICE WOULD GOES INTO SECOND CHAMBER WHERE PRODUCT WILL FLOW INTO TUBES AND IN OUTER CHAMBER COOLING TOWER WATER WOULD FLOW WHICH BRING DOWN THE JUICE TEMP. UPTO 65-70 DEGREE. COMPLETE SYSTEM WOULD BE MOUNTED ON SS PIPE FRAME WITH PRODUCT FEED PUMP, CONTROL PANEL FITTED WITH TEMP. SENSOR, TEMP. CONTROLLER FOR HOT BATTERY SYSTEM. SPECIALLY DESIGN TO PASTEURIZE JUICES TO INCREASE THE SELF LIFE. COMPLETE WITH HOT BATTERY SYSTEM, WATER FEED PUMP, PRODUCT FEED PUMP, FITTINGS AND CONTROL PANEL.

CAPACITY 105,300,000 LTR/6 HRS.

TUBE IN TUBE TYPE PASTEURIZER, SPECIALLY MADE TO PASTEURIZE PULP, SQUASH AND JUICES. SKID MOUNTED SYSTEM. THE SPECIAL FEATURE OF TUBE IN TUBE IS IT WOULD GIVE UNIFORM TEMP. TO PRODUCT. ALL CONTACT PARTS ARE MADE OF STAINLESS STEEL SS-304. THERE IS ONE BALANCE TANK WHICH IS CONNECTED WITH THE PRODUCT FEED PUMP FROM WHERE JUICE/SQUASH WOULD FEED IN TO THE INNER TUBES AND IN BETWEEN THE GAP OF BOTH INNER AND OUTER TUBES THE HOT WATER WOULD BE FLOW THROUGH A HOT WATER PUMP, THE HOT WATER IS GENERATED THROUGH HOT BATTERY SYSTEM, WHICH IS A SS TANK FOR MAINTAIN THE WATER LEVEL AND STEAM WOULD BE FLUSH THERE, THUS WATER WOULD BE HEATED AND FLUSH IN TO THE GAP OF INNER AND OUTER TUBES FOR MAXIMUM UTILIZATION OF HEAT TO JUICES WHICH BRING THE TEMP. OF JUICE UPTO 90-95 DEGREE.

COMPLETE SYSTEM WOULD BE MOUNTED ON SS PIPE FRAME WITH PRODUCT FEED PUMP, HOT WATER FEED PUMP, ALL VALVE CONTROL SYSTEM MANUALLY CONTROLLED. CONTROL PANEL FITTED WITH TEMP. SENSOR CUM CONTROLLER, ALL ON/OFF SWITCHES.



www.packaging-solutionsindia.com



+919818293306



packagingsolutionindia@gmail.com

MAYONNAISE PLANT

SPECIFICATIONS

- ALL CONTACT PARTS ARE MADE OF STAINLESS STEEL-304, NON-CONTACT PARTS LIKE IN & OUT SYSTEM FOR MIXING SYSTEM ARE MADE OF MILD STEEL WITH HYDRAULIC LIFTING.
- CAPACITY: 100-500KG/PER BATCH.
- WPS-HIGH SPEEDPRE-MIXER
- WPS-GEAR TYPE TRANSFER PUMP
- WPS-HIGH SHEAR HOMOGENISER
- WPS- SS PIPELINE & FITTINGS
- COMPLETE SYSTEM IS MOUNTED ON A SS SKID
- WPS-SINGLE HEAD PENUMATIC FILLER
- WPS-720-BAND SEALER



MORE INFO



www.packaging-solutionsindia.com



+919818293306, +919310352152



packagingsolutionindia@gmail.com

PASTE MAKING MACHINE

SPECIFICATIONS

- **CAPACITY: 50-150 KG/HR**
- **HAMMER AND BEATER TYPE SYSTEM, WITH FEED HOPPER, SS SIEVE. SPECIALLY DESIGNED TO MAKE PASTE OF CHILI/GINGER/GARLIC/ONION. ALL CONTACT PARTS MADE OF SS-304, MOUNTED ON M.S. FRAME COVERED WITH SS SHEETS.**
- **MOTOR: 5HP-10HP/3PH**



MORE INFO



www.packaging-solutionsindia.com



+919818293306, +919310352152



packagingsolutionindia@gmail.com

VACUUM FILLING MACHINE



SPECIFICATIONS:-

TWO, FOUR, & SIX HEAD FILLING HEADS, SUITABLE FOR FILLING ALL SIZES AND TYPES OF BOTTLES TO A PREDETERMINED LEVEL.

CAPACITY 20/30 BOTTLES/MINUTE. SUITABLE FOR FILLING ALL TYPES OF LIQUIDS TO A PREDETERMINED LEVEL IN GLASS, RIGID HPDE & ALUMINUM BOTTLES WITH NARROW NECKS. THE MACHINE IS DESIGNED TO ACCOMMODATE KETCHUP, HOT SYRUPS & IS FITTED WITH OVER FLOW GLASS JARS. COMPLETELY MADE OF STAINLESS STEEL 304. EQUIPPED WITH 2HP MOTOR AND AIR PUMP.



www.packaging-solutionsindia.com



+919818293306



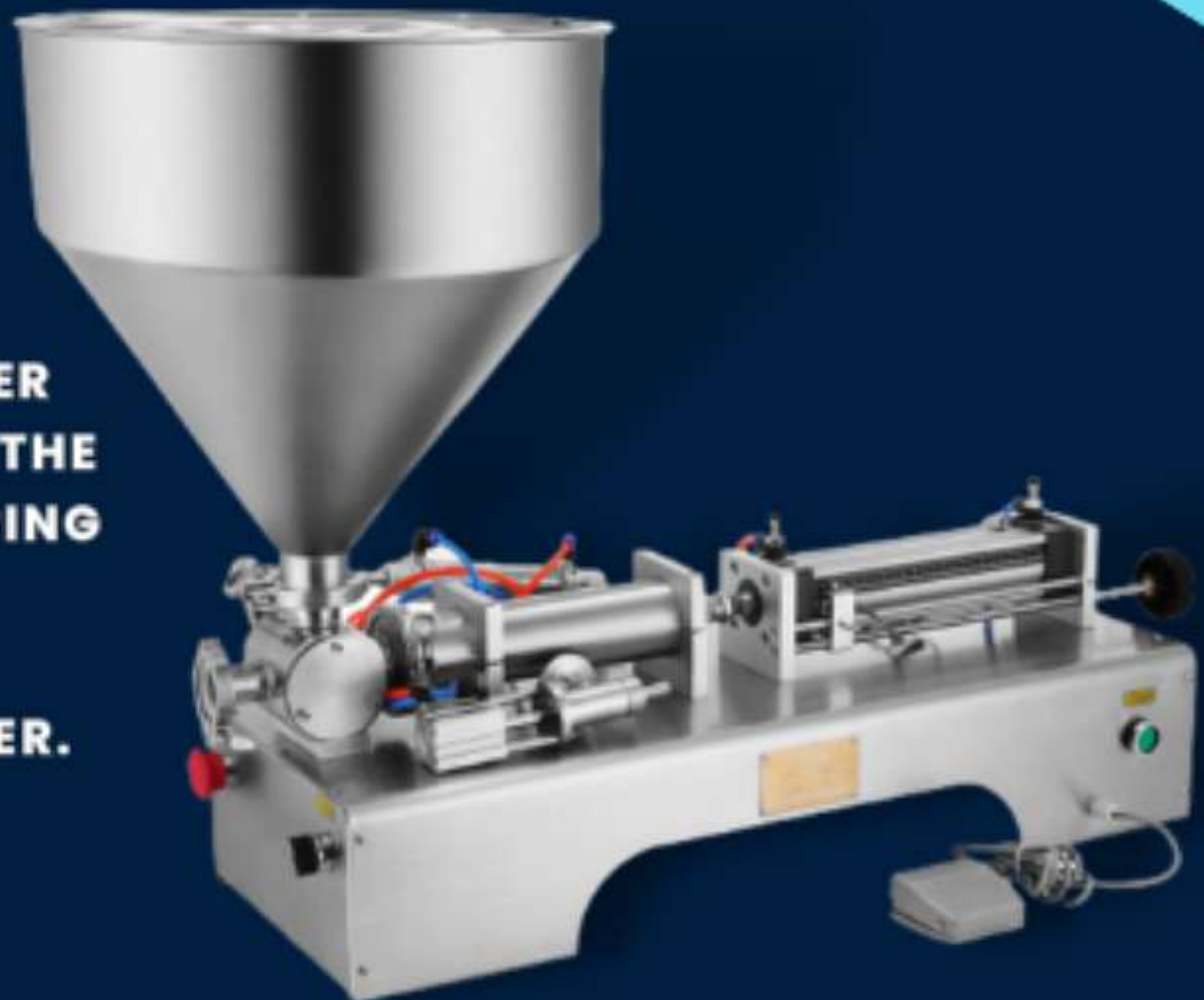
packagingsolutionindia@gmail.com

PNEUMATIC FILLER

SPECIFICATIONS:-



- **MODEL: SINGLE HEAD & DOUBLE HEAD**
- **FILLING RANGE: 100ML-1000ML**
- **SUITABLE FOR FILLING VISCOUS LIQUIDS LIKE HONEY, JAM, MAYONNAISE, CHEESE SPREAD GRAVY, SAUCES, ETC.**
- **EQUIPPED WITH A HOPPER WITH A LARGE INLET VOLUME AT ONCE**
- **CAPACITY-10-25 FILLS PER MINUTE DEPENDING ON THE OPERATOR**
- **COMPLETE MADE OF SS, CONFORM TO GMP STANDARD.**
- **AIR COMPRESSOR REQUIRED**
- **A ROTARY VALVE CONTROLS THE TRANSFER OF PASTE MATERIAL TO THE OUTLET, WITH NO DRIPPING**
- **THE WEIGHT RANGE IS EASILY ADJUSTABLE BY TURNING A TOGGLE LEVER.**



MORE INFO



+91 9818293306



packagingsolutionindia@gmail.com



www.packaging-solutionsindia.com

ROTARY BOTTLE

WASHER

SPECIFICATIONS:-

SPECIALLY DESIGNED TO WASH GLASS BOTTLES FROM INSIDE AND OUTSIDE. YOU HAVE TO PLACED THE BOTTLE MOUTH ON THE NOZZLES AND WITH HIGH PRESSURE SPRAY WATER DUST PARTICLES WILL REMOVE FROM INSIDE AND OUTER FOUNTAINS WILL WASH IT FROM OUTSIDE,
CAPACITY-24 BPM



www.packaging-solutionsindia.com



+919818293306



packagingsolutionindia@gmail.com

BOTTLE WASHING

MACHINE

SPECIFICATIONS:-

COMPLETE MADE OF M.S.
WITH 2 HEAD BRUSHES
AND ½ HP MOTOR. WITH
RINSING TANK OF G.I.
SUITABLE FOR
BRUSHING NEW OR
RECYCLED BOTTLES.
THE BRUSHES WHILE
ROTATING REACH THE
CORNERS AND CREVICES
OF BOTTLES TO REMOVE
DUST PARTICLES.



www.packaging-solutionsindia.com



+919818293306



packagingsolutionindia@gmail.com

RO CAP SEALER



SPECIFICATIONS:-

- HEAVY DUTY, SPECIALLY
- DESIGNED TO SEAL PLASTIC CAPS ON THE
- PLASTIC BOTTLES.
- OPERATOR HAVE TO PLACE
- THE CAP ON THE NECK AND THEN PLACE
- THE BOTTLE ON THE BASE PLATE OF SEALING
- MACHINE. EQUIPPED WITH ½ HP MOTOR.



www.packaging-solutionsindia.com



+919818293306



packagingsolutionindia@gmail.com

LUG CAP SEALING

MACHINE

SPECIFICATIONS:-

PNEUMATIC
OPERATED,
EQUIPPED WITH
PNEUMATIC
CYLINDER,
PROVIDES CONSTANT
PRESSURE ON THE
CAP AND THEN WITH
GENTLE TWIST OF
HANDLE THE CAP
GETS SEALED.



www.packaging-solutionsindia.com



+919818293306



packagingsolutionindia@gmail.com

ALUMINIUM CAP SEALER



SPECIFICATIONS:-

- .HEAVY DUTY WITH AUTOMATIC
- .THREADING AND ROLLER OPERATION. SUITABLE FOR SEALING
- .BOTTLES UPTO 4 INCHES DIA AND 2-12 INCHES HEIGHT
- .RANGE AND CLOSURE OF SIZE 18MM TO 70MM.COMPOSITE
- .WITH HEAD ADJUSTING HANDLE PLATFORM GUARD. 1SET
- .ROLLER ARM ASSEMBLY (LESS PRESSURE NOSE) HAND
- .OPERATED WITH ONE SIZE OF DIE



www.packaging-solutionsindia.com



+919818293306



packagingsolutionindia@gmail.com

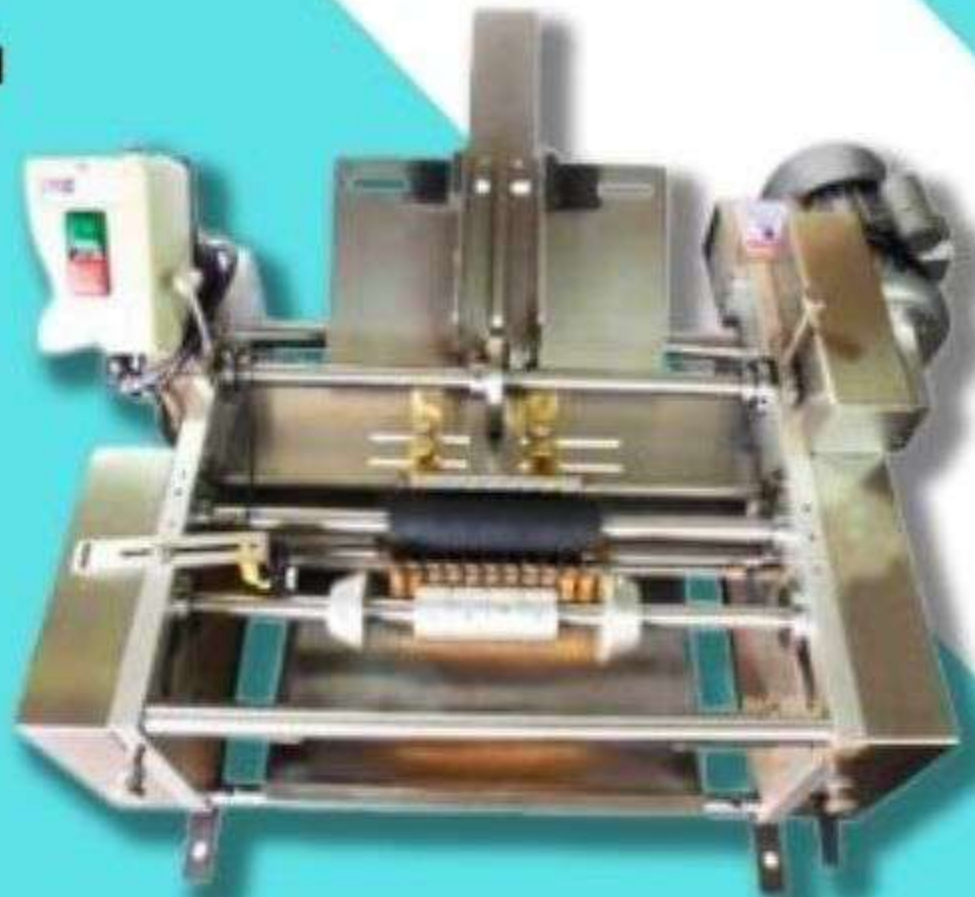
SEMIAUTOMATIC LABELING

MACHINE:

SPECIFICATIONS:-

SEMI-AUTOMATIC GLUE
STICKER LABELING
MACHINE, BOTTLE/TIN CAN
STICKER LABELING
MACHINE.

SPEED- 15 PER MINUTE,
FOR ROUND TIN
CANS/BOTTLES,
CONTAINER DIA-30-
100MM, HEIGHT OF
CONTAINER-35-200MM



www.packaging-solutionsindia.com



+919818293306



packagingsolutionindia@gmail.com

FRUIT & VEGETABLE SORTING/INSPECTION CONVEYOR

SPECIFICATIONS:-

THIS INSPECTION BELT CONVEYOR IS USED AS ONLINE TRIMMING/SORTING FOR VEGETABLES. THE SAME SHALL BE MADE OF SQUARE SECTION PROFILE OF SS. THE CONVEYOR BELT SHALL BE FOOD GRADE PVC WITH FIXED SLOW CONVEYING SPEED. THE BELT IS DRIVEN ON DRIVE AND DRIVEN ROLLERS BY A SUITABLE GEARED MOTOR. THE CONVEYOR IS FITTED WITH NECESSARY FEED AND DISCHARGE CHUTES. COMPLETE WITH SS 304



MORE INFO

BUCKET **ELEVATOR**



SPECIFICATIONS:-

SUITABLE TO FED VARIOUS PRODUCTS UP TO A HEIGHT INTO THE FRUIT MILL/PULPER. THE ELEVATOR IS FITTED WITH PP BUCKETS WHICH PICKS UP THE PRODUCT FROM FED HOPPER & TAKE THE PRODUCT DUMP INTO THE DISCHARGE HOPPER. ALL BUCKETS, BODY OF ELEVATOR, FED AND DISCHARGE HOPPER MADE OF SS 304.

CAPACITY-500-3000KGS./HRS.



www.packaging-solutionsindia.com



+919818293306



packagingsolutionindia@gmail.com

SCREW FEEDER



SPECIFICATIONS:-

SPECIALLY DESIGNED TO FEED FRUITS OR VEGETABLES TO YOUR HOT BREAKING SYSTEM. ALL CONTACT PARTS MADE OF STAINLESS STEEL AISI-304. MOUNTED ON FRAME. CAPACITY 500KGS./HRS. WITHIN FEED HOPPER AND OUTFEED.



www.packaging-solutionsindia.com



+919818293306



packagingsolutionindia@gmail.com

STEAM BOILER



SPECIFICATIONS:-

FUEL OPERATED WOOD, DIESEL,
PNG, ELECTRIC, LPG, TYPE
BOILER MADE OF MILD STEEL



www.packaging-solutionsindia.com



+919818293306



packagingsolutionindia@gmail.com

TRANSFER PUMP



SPECIFICATIONS:-

SPECIALLY DESIGNED TO TRANSFER TOMATO KETCHUP/MAYONNAISE FROM HIGH SPEED MIXER TO HOMOGENIZER.

EQUIPPED WITH MOTOR

HOPPER TYPE PUMP: SANITARY

VOLUMETRIC PUMP IS S.S FOR

TRANSFER OF LIQUIDS/ VISCOSE

PRODUCTS. THE PUMP IS POSITIVE

SINGLE SCREW TYPE WITH SS ROTOR.

WITH MOTOR.

TRANSFER PUMP: SANITARY

VOLUMETRIC PUMP IS S.S FOR

TRANSFER OF LIQUIDS/ VISCOSE

PRODUCTS. THE PUMP IS POSITIVE

SINGLE SCREW TYPE WITH SS ROTOR.

WITH 1HP/3PH MOTOR.

TRANSFER PUMP: CENTRIFUGAL PUMP

WITH PRODUCT CONTACT PARTS IN SS

304.



www.packaging-solutionsindia.com



+919818293306



packagingsolutionindia@gmail.com