

# HOM COLLECTIVE **Noida Sec-8**



Contact No. 9899720099,9310599502



Email Id :- collectivehom@gmail.com ,  
info@homcollective.in



Website :- <https://homcollective.in>



Address :- C-82B , sector 8 , 1st floor Above  
KTM showroom Noida - 201301  
Uttar Pradesh India



@hom.collective



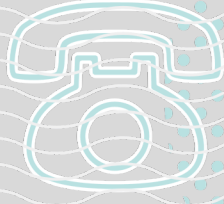
@HOM\_Collective



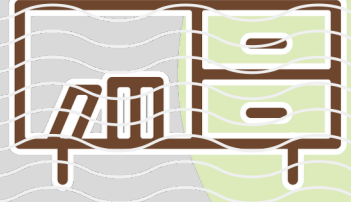
@hom.collective



@HOM Collective



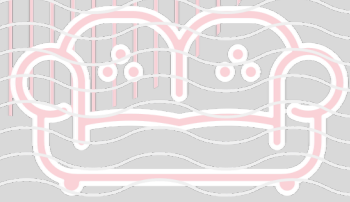
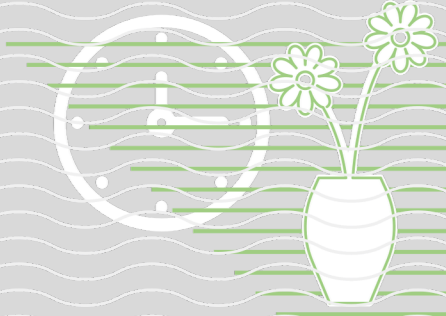
DOLCE VITA



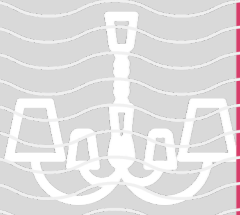
COCOON



LOUNGE



# TRENDS



URBAN





**COCOON**  
**WELLBEING AND SIMPLICITY**  
The warmth of care and earthy tones.



**DOLCE VITA**  
**RELAXED LIFESTYLE**  
Delicate Scandinavian shades with an urban style.



**LOUNGE**  
**A TOUCH OF ELEGANCE**  
Colours of sophistication.



**METALLICS**  
**DIGNITY IN SHINE**  
Royal and bold. Designs with grandeur.



**PASTELS**  
**SUBTLE COMFORTS**  
The power of simplicity with a blend of luxury.



**POP**  
**HIGH-IMPACT SHADES**  
Bringing spaces alive.



**URBAN**  
**GRAPHIC DESIGN**  
Dare to make a modern statement.





CAPPUCINO

EXTRA WHITE

CHOCO BROWN

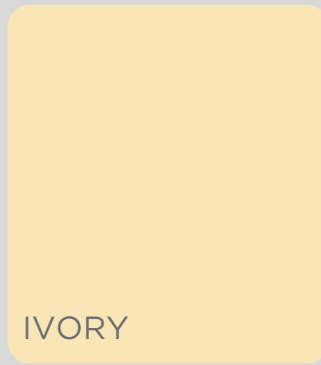
## COCOON

### WELLBEING AND SIMPLICITY

A family of warm neutrals - warm whites, ivory, beige and deep browns - lends a colour palette that evokes the natural, calming tones of wood, plants and earth. Creating timeless spaces of warmth and comfort that inspire and endure.

## WARM NEUTRALS





## DOLCE VITA RELAXED LIFESTYLE

Drawing inspiration from subtle Scandinavian colours and the glamour of La Dolce Vita, these half-tones provide a gentle wash of colour. The subtle delicate shades are complemented by the shine, depth and modernity of glass.



## SOBER SEMI-TONES





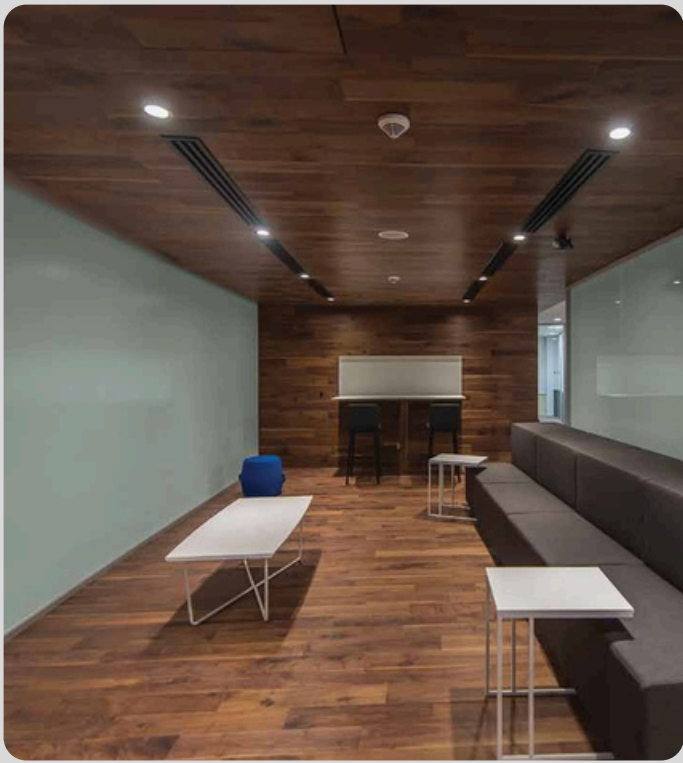
## LOUNGE

### A TOUCH OF ELEGANCE

Intense blues and deep velvety reds. These dark colours are the hallmarks of sophistication, transforming any area into a haven of understated elegance and peace. Truly, shades that bring a refined, theatrical quality to any space.

## ELITE HUES





ARGENT  
METALLISE

CHAMPAGNE

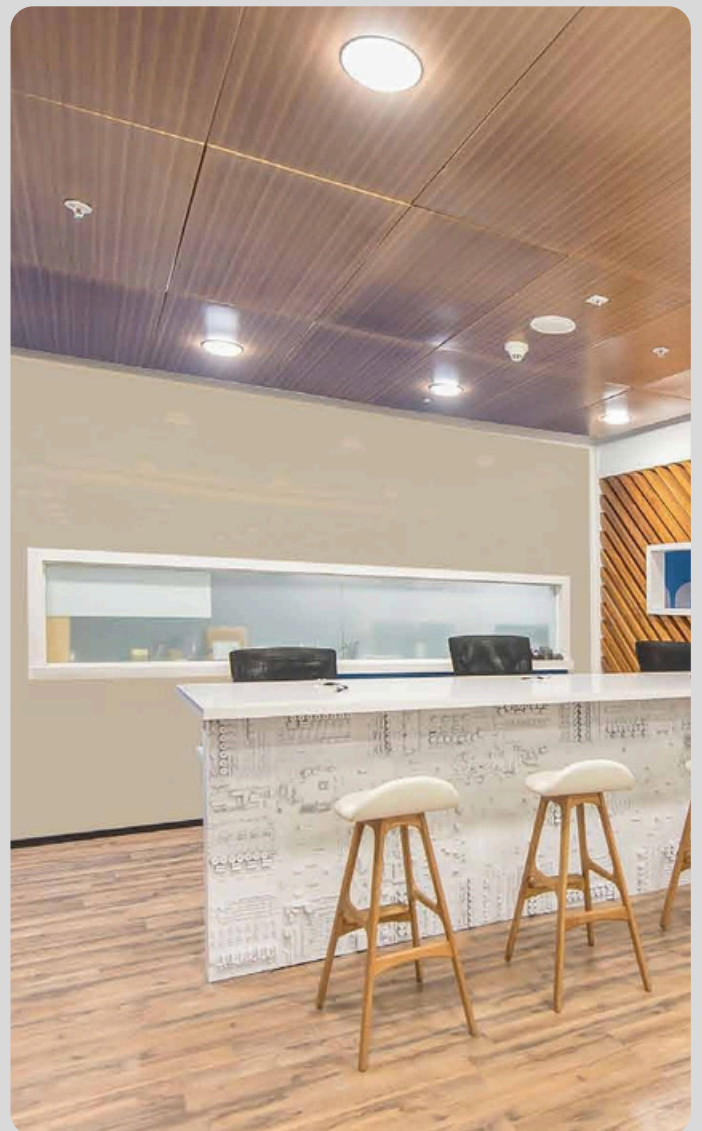
VERT ONYX METALLISE

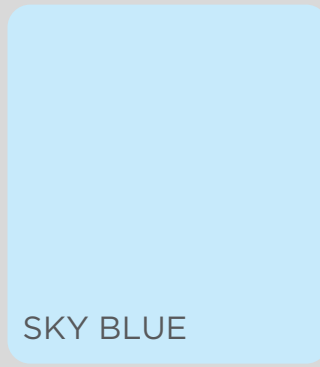
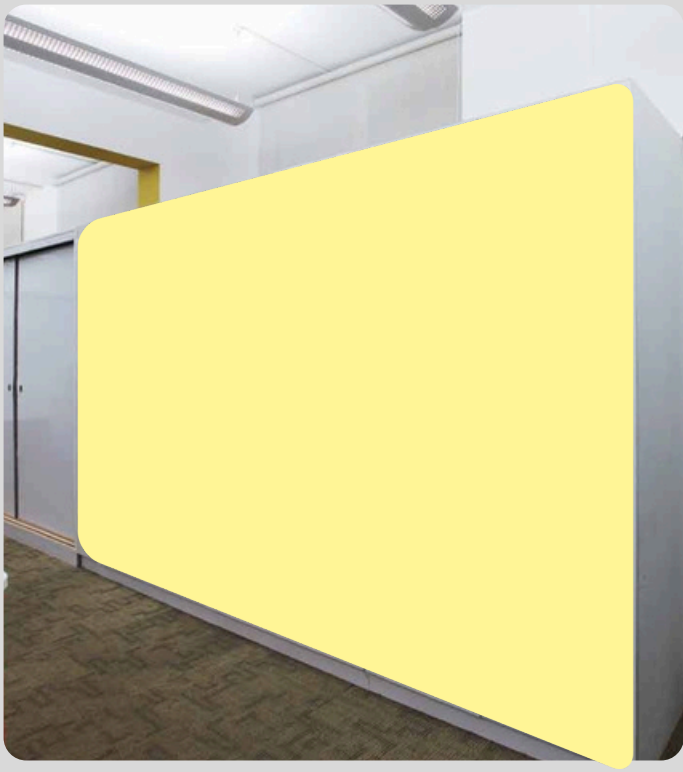
## METALLICS

### DIGNITY IN SHINE

Inspired by the smooth and shiny finish of everyday objects, Metallics are synonymous with the royal colours of grandeur. They impart a subtle yet strong effect to spaces, accentuating their elegance.

## IMPERIAL SHINE

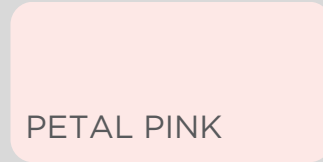




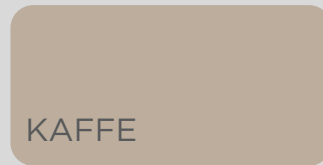
SKY BLUE



LEMON YELLOW



PETAL PINK



KAFFE



AQUAMARINE

## PASTELS

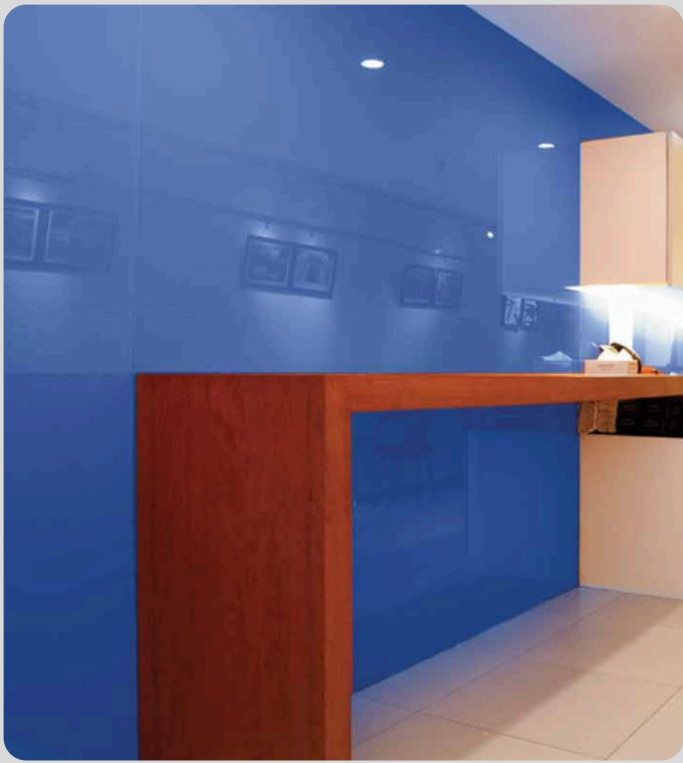
### SUBTLE COMFORTS

Energising yet not overwhelming, these subtle shades inspire feelings of mellow warmth and good cheer. Aesthetically pleasing, they evoke a sense of wellbeing, making one feel intrinsically happy.

## MELLOW TONES







## POP

### HIGH-IMPACT SHADES

A range of pure colours that infuse a renewed zest for life - and make it large. Vivacious reds, dynamic greens and distinctive raspberry, lend depth and character to spaces. These bold, mood-elevating shades add a personal touch to one's interiors.

### VITALITY IN SPACES





ULTRA WHITE



TITANIUM GREY



BLACK

## URBAN GRAPHIC DESIGN

Inspired by cool mineral colours of stones and metals, this colour palette of grey, pure white and deep black comes with a clean, distinctive style. Crafting a décor that is all about going back to the basics - a daringly modern statement that embraces its urban roots.

## COOL NEUTRALS



APP



POP

LICA

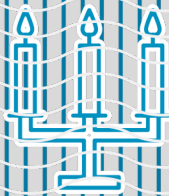
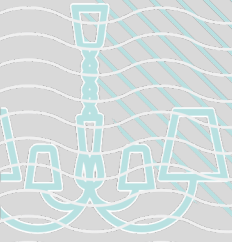


TIONS

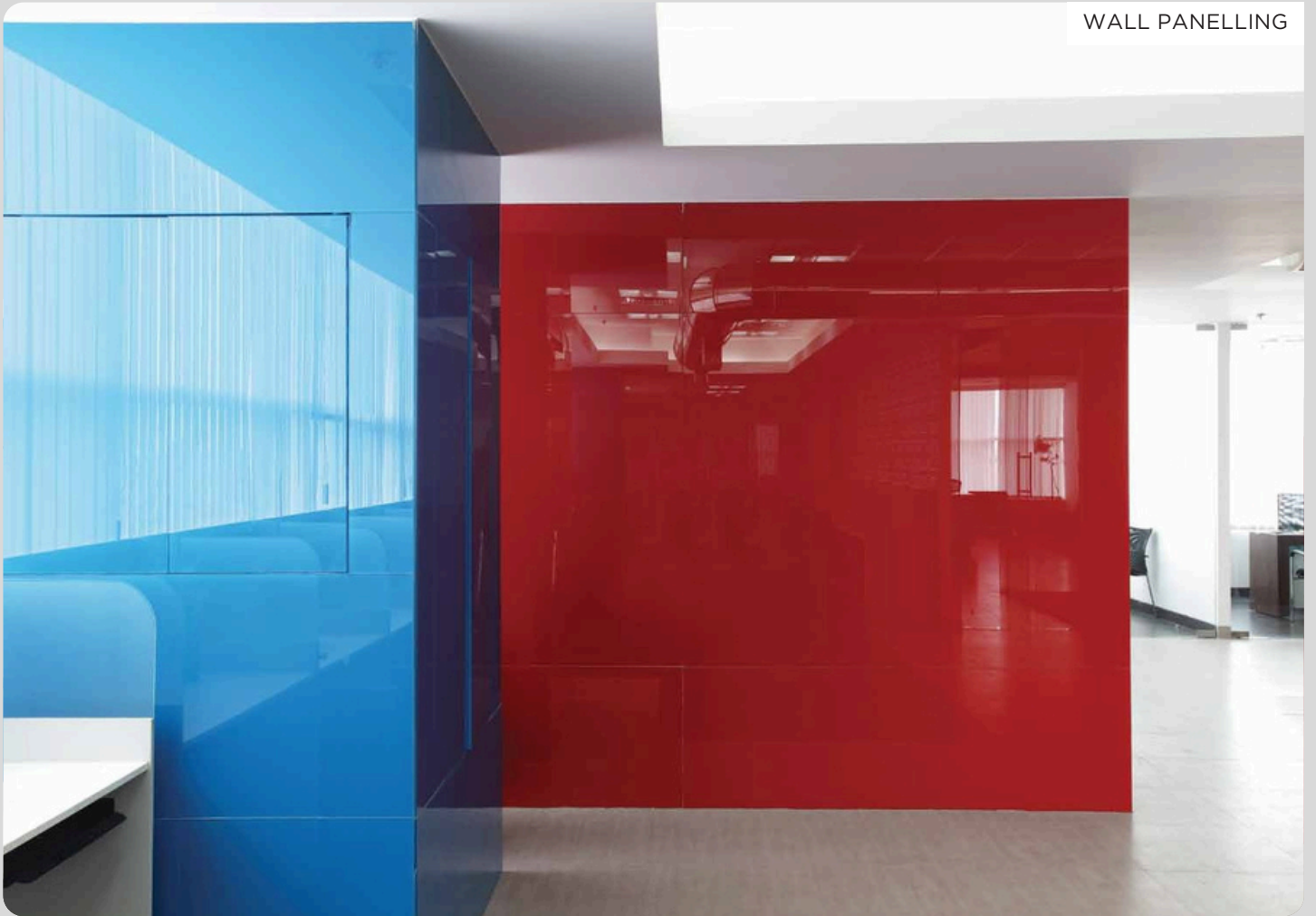


STAIRS

METALLICS



WALL PANELLING



KITCHEN SPLASHBACKS



KITCHEN SPLASHBACKS



WALL PANELLING



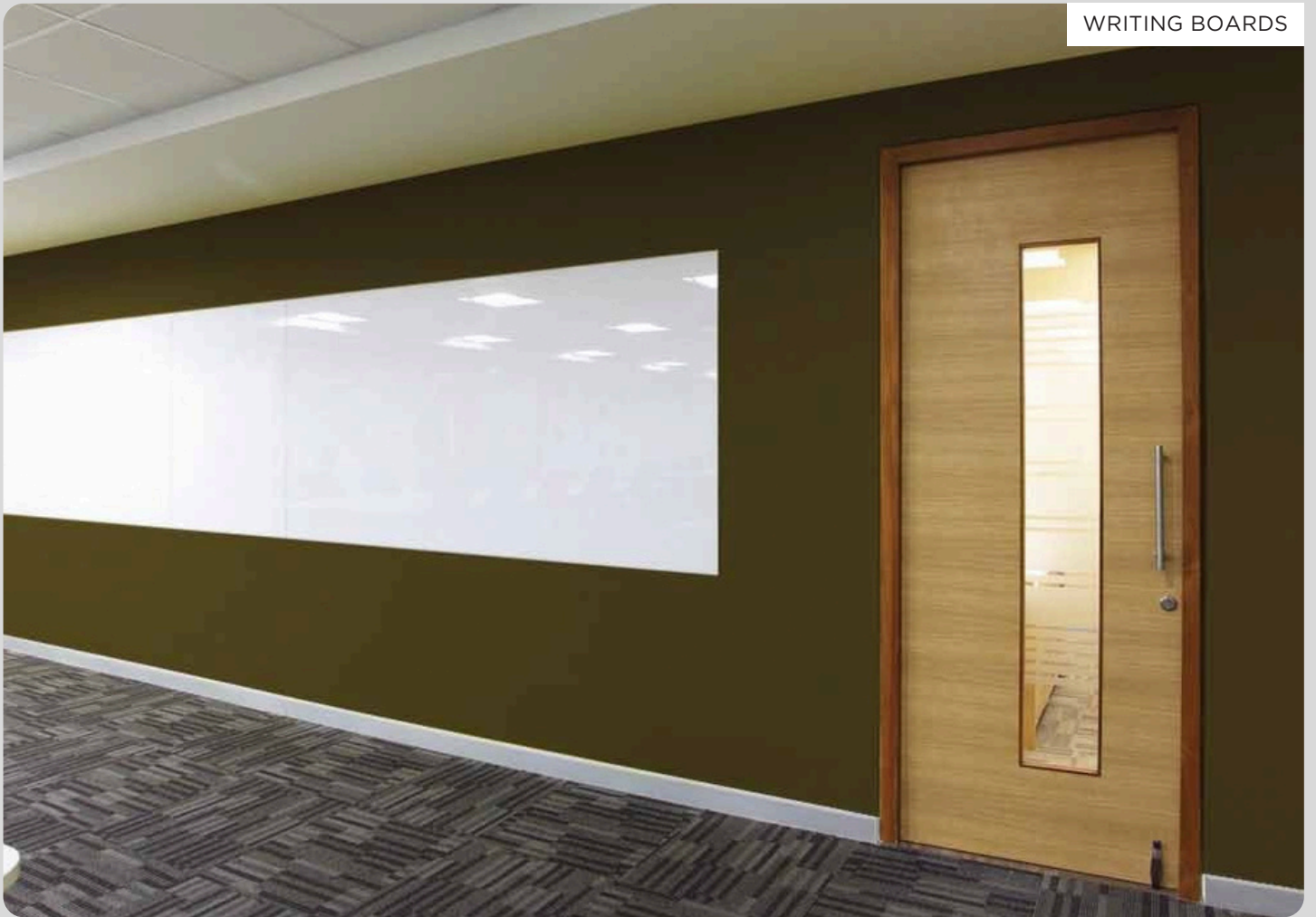
WARDROBES



WARDROBES



WRITING BOARDS

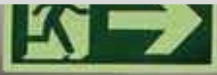


WASHROOMS

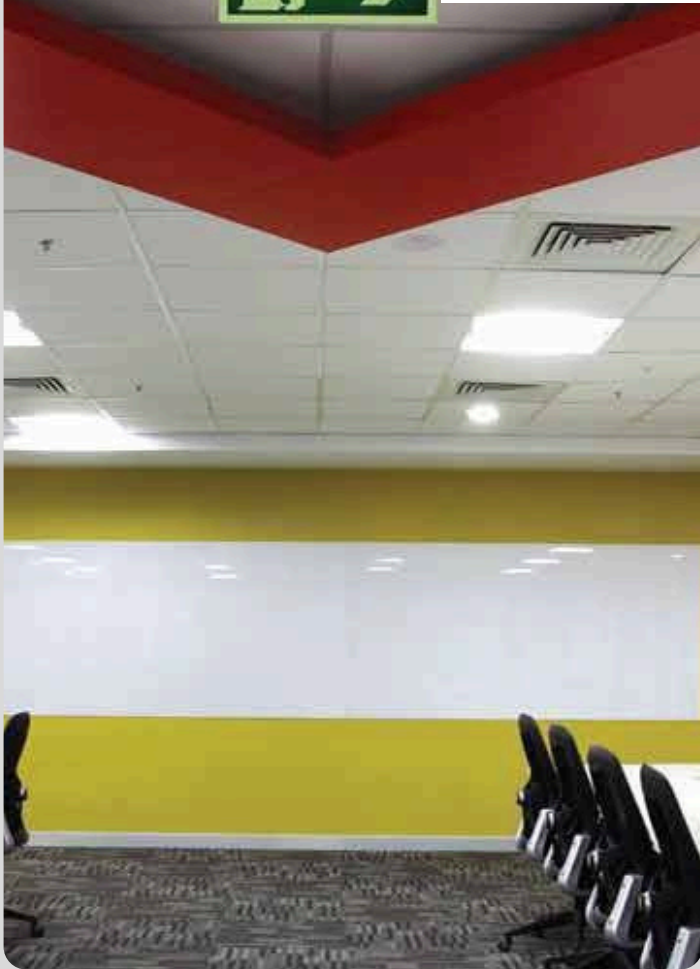


WALL PANELLING

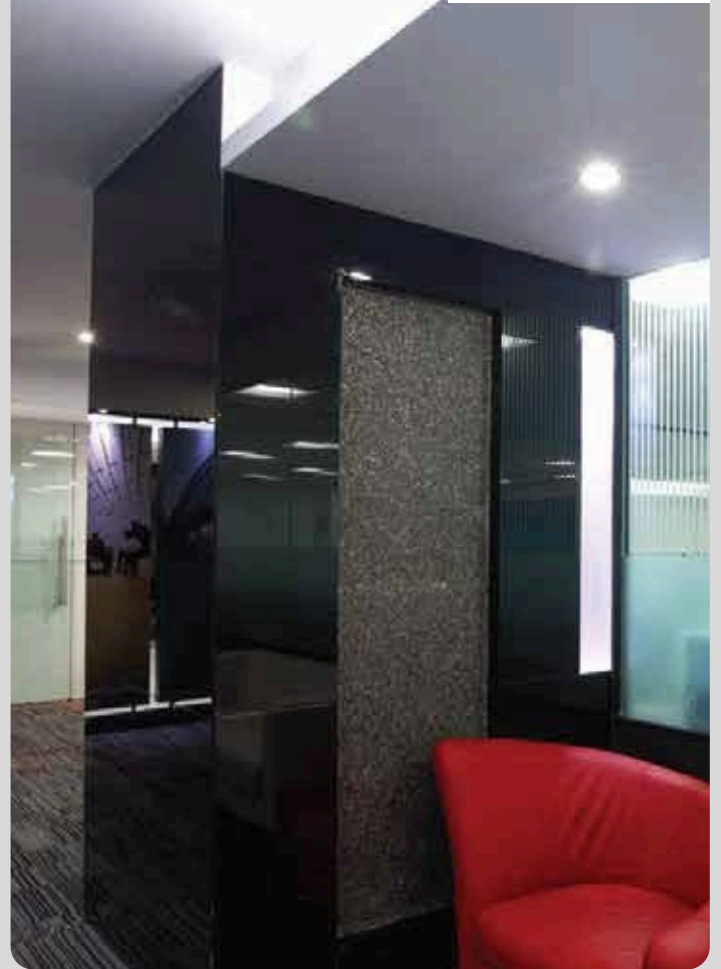




WRITING BOARDS



COMMON AREAS



WASHROOMS



# A WHOLE RANGE OF PREMIUM LACQUERED GLASS FOR INTERIORS

SGG Planilaque is a range of high-durability lacquered glass ideal for use in interior furnishings and decorations. Its supreme quality and exquisite gloss, lend a contemporary appeal to evolving designs in architecture.



## QUALITY AND DURABILITY

This collection combines the beauty and clarity of lacquered glass, lending it a world-class quality that enhances interiors. Its unique composition makes the glass highly durable, enabling it to withstand damp and humid environments such as in kitchens and bathrooms, without additional protective backing.



## MAINTENANCE

SGG Planilaque is very easy to maintain. Simply use a soft cloth and a standard non-abrasive glass-cleaning product, to clean it.



## APPLICATION

The range consists of 26 shades and they are suitable for various types of areas, depending on the required ambience.

Lacquered glass enhances indoor areas, and can be used in:

1. Interior wall panelling – Homes, Kitchens, Bathrooms, Offices, etc.
2. Partitions and Lift lobbies
3. Signage, Writing boards, Furniture and Washrooms.





## SAFETY

SGG Planilaque is classified A2-S1-D0 with regard to its fire reaction. To avoid the risk of injury in the event of impact, this product is available as lacquered protective glass (SGG Planisafe version). A safety film is applied to the back of the glass, which holds the fragments of glass in place if it breaks.



## ENVIRONMENT

SGG Planilaque helps maintain a healthy and non-polluted environment. It meets stringent standards, with respect to emission of formaldehyde and other volatile organic compounds (VOC).



## PROCESSING

The processing of SGG Planilaque lacquered glass is similar to that of mirrors: it can be cut, drilled, edge-worked, scored, screen-printed and sandblasted. For cutting, the lacquered side must face towards the supporting wall, which must be flat, dry and free from all harsh substances in order to protect the lacquer.

Standard thicknesses and dimensions:

4 mm: 3210 x 2550 mm

6 mm: 3210 x 2400 mm



## INSTALLATION

SGG Planilaque lacquered glass is for indoor use only and must be fitted in accordance with current regulations and good professional practices. It can be installed quickly and easily by mechanical fixing (in channels or using fixing pads), or by adhesive fixing (using neutral silicone and/or double-sided adhesive pads.)

In addition to its existing range of products, Saint-Gobain offers a variety of accessories that are best compatible for glass installation.

## GLASSMATE

Saint-Gobain Inspire introduces an exclusive range of Glass Installation accessories under Glassmate – Silicones, Tapes and Clips. These products are eco-friendly, easy-to-use glass fixing solutions that ensure safer and faster installation, leading to reduction of time and costs.

Products under Glassmate are recommended for use with all variants of SGG Planilaque, SGG Planilaque Strong and SGG Planilaque Silk.



Primafix  
Silicone



Ultrafix  
Silicone



Double Sided Tape



Masking Tape



Edge Shield



SGG Planiclip %

# Thank You

for taking the time to explore our catalogue. We hope You've found inspiration and valuable information within these pages.

If you have any questions or need further assistance, please don't hesitate to reach out to us. We're here to help and would be delighted to assist you in any way we can.

We look forward to serving you and hope to continue Providing you with excellent products and services.

Follow us on



+91 9899720099  
+91 9310511502



[info@homcollective.in](mailto:info@homcollective.in)



C-82/B First Floor  
Sector-8 Noida (201301)